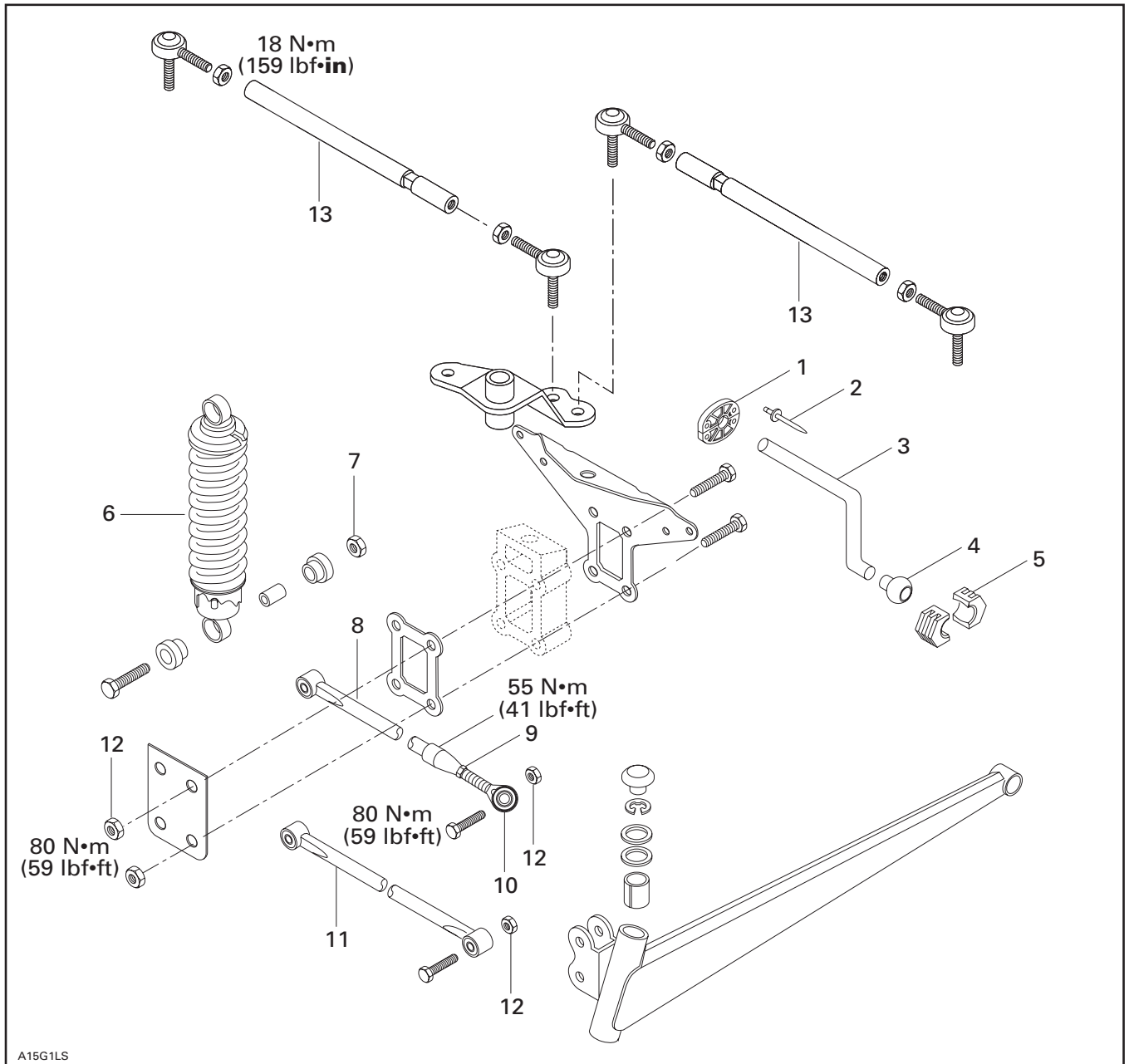




◆ **WARNING :** For safety reasons, this kit must be installed by an authorized Bombardier Ski-Doo snowmobile dealer. Should removal of a locking device be required when undergoing disassembly / assembly, always replace with a new one. This instruction sheet should be given to the purchaser after modification. This kit is designed for specific applicable models only. It is not recommended for snowmobiles other than those for which it was sold.

○ **NOTE :** Installation time is approximately 2.5 hours.

### PARTS TO BE INSTALLED



1. Half Bushing (4)
2. Pop-Rivet (8)
3. Stabilizer Bar
4. Ball Joint (2)
5. Sliding Block (4)
6. Shock Absorber (2)
7. Elastic Nut M10 (4)

8. Upper Arm Assembly 40 in (2)
9. Jam Nut M14 (2)
10. Ball Joint (2)
11. Lower Arm Assembly (2)
12. Elastic Nut M12 (8)
13. Tie-rod (2)
14. Spacer (4)

## VEHICLE PREPARATION

Lift the front of the vehicle and support it with a stand.

Remove nuts and bolts from upper and lower control arms which are attached to the swing arms.

Remove tuned pipe(s).

Loosen inner and outer tie-rod lock nuts.

Remove the tie-rod by unscrewing it from the ball joints on both sides.

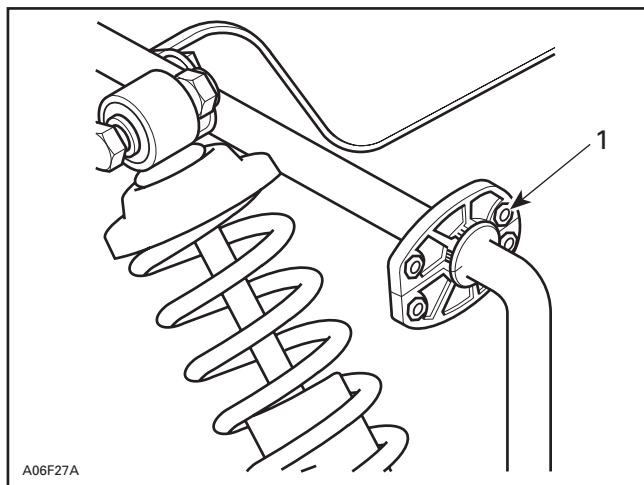
Remove shock absorber assembly.

### **Models equipped with the 500 engine**

Remove the plastic caps from the sides of the bottom pan.

### **Models equipped with the 583 or the 670 engine**

Remove pop rivets from half bushings on the stabilizer bar.



1. Pop rivets (4)

Spread the swing arms apart to free the stabilizer bar.

Remove half bushings from their location then remove the stabilizer bar.

## INSTALLATION

### **All Models**

To facilitate installation, proceed with installing one side at a time.

Unscrew the nuts that are holding the upper and lower arms to the link plate.

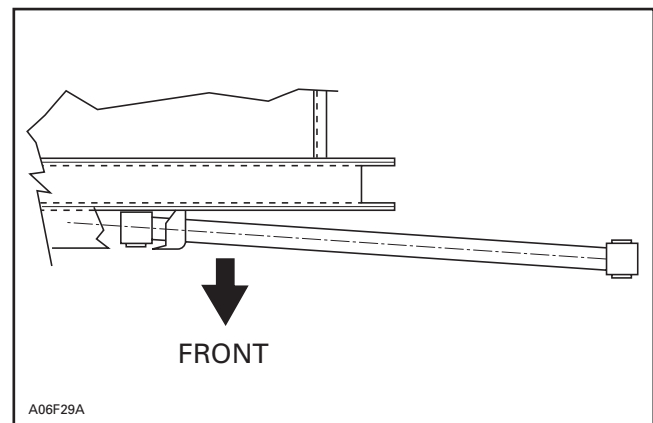
Begin by removing one stud at a time.

Install the ball joint **no. 10** with jam nut **no. 9** on upper arm assembly **no. 8**.

Remove the upper bolt and arm, replace with new one making sure that the ball joint is toward the outside of the machine.

Reinstall the new lower arm **no. 11** using M12 elastic nuts **no. 12** (inner side only, do not tighten yet).

Position arms with the angle toward the front as illustrated.



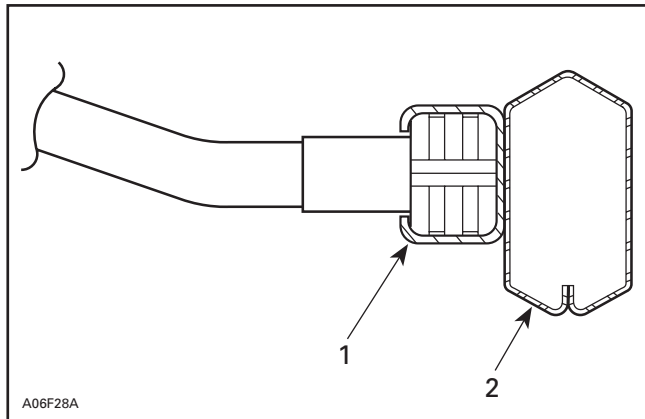
Install new stabilizer bar **no. 3**.

Install half bushing **no. 1** using pop rivets **no. 2**.

Install ball joint **no. 4** in the sliding blocks **no. 5**.

○ **NOTE** : Install both sliding blocks at the same time.

Install sliding block into swing arm. Refer to the following illustration.



1. Sliding block
2. Swing arm

Reinstall bolts. Install spacers no. 14 (one on each side of the ball joint) and new elastic nuts **no. 12** on upper and lower control arms. Tighten inner and outer bolts.

Install shock absorber **no. 6** using new elastic nuts **no. 7** on top and on bottom.

Install tie-rod **no. 13**.

Reinstall tuned pipe(s).

## ADJUSTMENTS

After assembly, perform a ski alignment and a ski leg camber adjustment.

Refer to the *Ski-Doo Shop Manual* for proper adjustment procedures.

860 3045 00

1.	572 0776 00	Half Bushing (4)	Demi-douille (4)
2.	390 4023 00	Pop-Rivet (8)	Rivet (8)
3.	506 1272 00	Stabilizer Bar	Barre stabilisatrice
4.	506 1273 00	Ball Joint (2)	Joint à rotule (2)
5.	572 0698 00	Sliding Block (4)	Bloc coulissant (4)
6.	580 6363 00	Shock Absorber (2)	Amortisseur (2)
7.	228 5010 45	Elastic Nut M10 (4)	Écrou d'arrêt élastique M10 (4)
8.	580 6453 00	Upper Arm Assembly 40 in (2)	Bras de suspension supérieur de 40 po (complet) (2)
9.	228 3710 42	Jam Nut M14 (2)	Contre-écrou M14 (2)
10.	414 9764 00	Ball Joint (2)	Joint à rotule (2)
11.	580 6231 00	Lower Arm Assembly (2)	Bras de suspension inférieur (complet) (2)
12.	228 5210 45	Elastic Nut M12 (8)	Écrou d'arrêt élastique M12 (8)
13.	506 1192 00	Tie-rod (2)	Barre d'accouplement (2)
14.	224 0212 51	Spacer (4)	Rondelle (4)