



No. **99A-101**

Date: October 5, 1998

**SUBJECT: Accessories no longer Available  
1999 Model Year**

**MEMO TO: ALL SKI-DOO DEALERS AND DISTRIBUTORS**  
**ATTENTION: PARTS AND SERVICE MANAGERS**

Please be advised that the following accessories are no longer available:

*	P/N	DESCRIPTION
1	860 704 300	Handlebar Grip Kit (Viper Red)
1	860 704 400	Handlebar Grip Kit (Yellow 2000)
1	860 704 500	Handlebar Grip Kit (Solid Purple)
	415 127 502	Cloud Nine Cushion (Burgundy)
2	415 127 507	Seat Cover (Yellow)
	415 127 516	Quick Installation Low Windshield
	415 127 517	Low Windshield Quick Installation Kit
	506 151 205	LH Steering Arm (Yellow)
	506 151 206	RH Steering Arm (Yellow)
	506 151 207	LH Steering Arm (Purple)
	506 151 208	RH Steering Arm (Purple)

**\*(1)** These Handlebar Grips are also removed from the following Custom Color kits:

- (P/N 860 703 500)
- (P/N 860 703 600)
- (P/N 860 704 100)
- (P/N 860 704 200)
- (P/N 860 704 800)
- (P/N 860 705 100)

**\*(2)** For Formula Z and Formula DeLuxe use (P/N 415 127 508) instead.

Please advise all involved personnel of these changes.



No. **99-101**

Date: October 16, 1998

**SUBJECT: Tuned Pipe Shell  
(1998 and 1999)**

**TO ALL SNOWMOBILE DEALERS AND DISTRIBUTORS**

**ATTENTION: PARTS AND SERVICE MANAGERS**

This Bulletin updates the **1998** *Parts Catalogs* pertaining to tuned pipe shells.

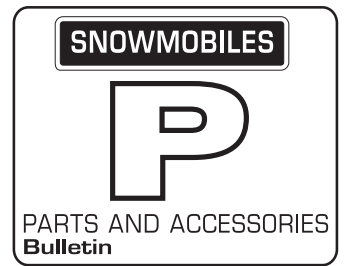
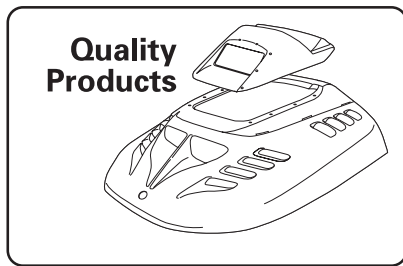
MODELS	DESCRIPTION	P/N
MX Z 500	Upper Shell	514 044 020
	Lower Shell	514 048 504
Grand Touring 500	Upper Shell	514 044 020
	Lower Shell	514 048 504
Formula Deluxe 500	Upper Shell	514 044 020
	Lower Shell	514 048 504
Formula Z 500	Upper Shell	514 044 020
	Lower Shell	514 048 504
Summit 500	Upper Shell	514 044 020
	Lower Shell	514 048 504
MX Z 670	Upper Shell	514 044 610
	Lower Shell	514 044 611
MX Z 583	Upper Shell	514 044 610
	Lower Shell	514 044 611
Grand Touring 583	Upper Shell	514 044 610
	Lower Shell	514 044 611
Formula Z 670	Upper Shell	514 044 610
	Lower Shell	514 044 611
Formula Z 583	Upper Shell	514 044 610
	Lower Shell	514 044 611
Summit 583	Upper Shell	514 044 610
	Lower Shell	514 044 611
Summit 670	Upper Shell	514 044 610
	Lower Shell	514 044 611
MX Z x 440 LC	Upper Shell	514 048 905
	Lower Shell	514 048 906

MODELS	DESCRIPTION	P/N
Summit X 670	Pipe Upper Shell	514 052 810
	Pipe Lower Shell	514 052 811
	RH Muffler Heatshield	514 051 700
	LH Muffler Heatshield	N.A.
Formula III 600	Front Pipe Upper Shell	514 052 410
	Front Pipe Lower Shell	514 052 411
	Rear Pipe Upper Shell	514 052 412
	Rear Pipe Lower Shell	514 052 413
	RH Muffler Heatshield	514 047 000
	LH Muffler Heatshield	514 047 200
Mach Z	Pipe Upper Shell	514 047 511
	Pipe Lower Shell	514 047 510
	RH Muffler Heatshield	514 047 000
	LH Muffler Heatshield	514 047 200

MODELS	DESCRIPTION	P/N
Mach 1	Pipe Upper Shell	514 047 511
	Pipe Lower Shell	514 047 510
	RH Muffler Heatshield	514 047 000
	LH Muffler Heatshield	514 047 200
Grand Touring SE	Pipe Upper Shell	514 047 511
	Pipe Lower Shell	514 047 510
	RH Muffler Heatshield	514 047 000
	LH Muffler Heatshield	514 047 200
Formula III 700	Pipe Upper Shell	514 047 807
	Pipe Lower Shell	514 047 806
	RH Muffler Heatshield	514 047 000
	LH Muffler Heatshield	514 047 200
Grand Touring 700	Pipe Upper Shell	514 047 807
	Pipe Lower Shell	514 047 806
	RH Muffler Heatshield	514 047 000
	LH Muffler Heatshield	514 047 200

Please record the following information in the appropriate **1999** *Parts Catalogs*.

MODELS	DESCRIPTION	P/N
MX Z 670 HO	RH Muffler Heatshield	514 051 700
	Lower Shell	514 052 755 replaced by 514 052 992
Summit 670	RH Muffler Heatshield	514 051 700



Date: November 19, 1998

No. **99-102**

**TO ALL U.S. DEALERS**

**SUBJECT: Fast Moving Parts 1999  
MX Z 600 and Summit 600**

Snowmobile season is at our doorstep and customers will want parts for these new models.

To help you get ready for this beginning of season, we prepared a listing of fast moving parts, covering engine, transmission, suspension, body etc., for these new models.

**Please place your order using the attached forms and sent it to your respective order desk.**

**NOTE:** Remember that time is running fast; orders will be treated on a first come first served basis.

**NOTE:** In some cases in the list, prices are not known yet; a second printing will be made in December once we get them in.

*Parts catalogs* for these models will be available shortly; please note their P/N:

- 1999 MX Z 600, P/N 484 400 017
- 1999 Summit 600, P/N 484 400 018

## PARTS FOR 593 ENGINE

TO ALL U.S. DEALERS						
NEW 1999	P/N	DESCRIPTION	QTY	US DEALER	US RETAIL	TOTAL
*	420 888 203	Crankcase Assy				
*	420 841 316	Hex. Screw Collar M8 x 75 SW 11				
	420 940 636	Hex. Screw Collar M8 x 45 SW 12				
*	420 640 311	Hex. Screw Collar M6 x 45				
	420 941 646	Stud M10 - 23/17				
	420 956 510	Check Valve				
*	420 632 010	Dowel Pin				
	420 860 965	Cable Grommet				
*	420 874 360	T-Fitting				
	415 110 000	Hose				
	420 232 100	Ball Bearing (for crankcase)				
*	420 837 421	Water Pump/Oil Pump				
	420 230 195	Oil Seal (for water pump)				
	420 232 100	Ball Bearing (for water pump)				
	420 650 370	Oil Seal (for water pump)				
*	420 950 890	O-Ring (for water pump)				
	420 840 511	Allen Screw M5 x 16		See price list		
	420 227 945	Washer				
*	420 222 505	Water Impeller				
*	420 931 810	Gasket (for water pump)				
*	420 922 630	Water Pump Housing				
	420 240 031	Hex. Screw M6 x 25				
	420 230 400	O-Ring (for crankcase)				
*	420 888 260	Oil Pump Assy				
	420 941 925	Tapping Screw M5 x 16				
	414 413 800	Oil Line				
*	420 059 301	Short Block 593				
*	420 888 250	Crankshaft				
	420 827 445	Distance Ring				
*	420 832 590	Ball Bearing 6206 (for crankshaft)				
	420 827 050	Retaining Disk				
	420 427 684	Washer, Adjustable				
*	420 931 790	Oil Seal (for crankshaft)				

Dealer # \_\_\_\_\_

Dealer name \_\_\_\_\_

**TO ALL U.S. DEALERS**

NEW 1999	P/N	DESCRIPTION	QTY	US DEALER	US RETAIL	TOTAL
	420 827 760	Distance Ring		See price list		
*	420 832 575	Ball Bearing 6207 (for crankshaft)				
*	420 931 450	Oil Seal (for crankshaft)				
	420 927 710	Retaining Disk				
	420 831 950	Oil Seal (for crankshaft)				
	420 246 015	Woodruff Key				
	420 945 759	Lock Washer 22 mm				
	420 842 230	Hex. Nut M22 x 1.5				
	420 832 425	Needle Bearing (for piston)				
*	420 886 685	Piston Assy (1 ring 75.89 mm)				
*	420 815 150	Semi Trapeze Ring 76.00 mm				
*	420 916 410	Gudgeon Pin				
*	420 845 102	Piston Circlip				
*	420 832 590	Ball Bearing 6206 (for crankshaft)				
	420 831 990	Oil Seal (for crankshaft)				
*	420 834 350	Central Gear				
*	420 931 580	Gasket 0.3 mm (for cylinder)				
*	420 931 581	Gasket 0.4 mm (for cylinder)				
*	420 931 582	Gasket 0.6 mm (for cylinder)				
*	420 923 435	Cylinder with Sleeve				
*	420 854 370	Exhaust Valve				
	420 430 110	O-Ring (for exhaust valve)				
*	420 250 239	Gasket (for exhaust valve)				
	420 854 265	Valve Housing				
	205 062 044	Socket Screw HD DIN. 912				
*	420 260 723	Bellows				
	420 838 253	Spring Clamp				
	420 854 447	Exhaust Valve				
*	290 239 048	Hose Spring				
	420 239 946	Spring				
	420 911 551	Valve Cover				
	420 241 220	Adjuster Screw				
	420 838 082	Spring Clip				
	420 841 996	Screw M8 x 68.5				

Dealer # \_\_\_\_\_

Dealer name \_\_\_\_\_

**TO ALL U.S. DEALERS**

NEW 1999	P/N	DESCRIPTION	QTY	US DEALER	US RETAIL	TOTAL
*	420 931 590	Rubber Ring		See price list		
	420 850 540	O-Ring (for cylinder head)				
*	420 923 450	Cylinder Head				
*	420 950 320	O-Ring (for cylinder head cover)				
	420 430 782	O-Ring (for cylinder head cover)				
*	420 923 460	Cylinder Head Cover				
	420 841 306	Hex. Screw Collar M8 x 65 SW 11				
	420 941 621	Hex Screw Collar M8 x 56.5				
	414 834 100	Thermostat				
	420 931 270	Sealing Ring				
	420 922 025	Bent Outlet Socket				
	420 941 250	Tapping Screw M6 x 20				
*	420 850 338	Gasket (for cylinder head cover)				
	420 922 062	Bent Outlet Socket				
	420 240 480	Plug Screw 1/8-27 NPT				
	420 941 451	Hex. Screw Collar M6 x 40				
*	420 250 015	Gasket Ring (for cylinder head)				
	420 841 921	Plug Screw M12 x 1.5				
	420 924 519	Reed Valve Assy				
	420 924 532	Pedal Reed				
	420 924 539	Pedal Reed Stop				
	420 941 215	Oval Head Screw M3 x 5				
*	420 867 805	Carburetor Socket				
	420 941 925	Tapping Screw M5 x 16				
*	420 851 440	Clamp				
*	420 867 815	Intake Resonator				
*	420 931 610	Gasket (for exhaust manifold)				
*	420 979 542	Exhaust Manifold				
*	420 923 441	Cylinder Sleeve				
*	420 888 580	Engine Gasket Set				
*	420 888 585	Cylinder Gasket Set				
*	410 922 914	Magneto - Gen.				
*	410 922 915	Stator Plate				
*	410 922 906	Flywheel				

Dealer # \_\_\_\_\_

Dealer name \_\_\_\_\_

**TO ALL U.S. DEALERS**

NEW 1999	P/N	DESCRIPTION	QTY	US DEALER	US RETAIL	TOTAL
	222 963 065	Socket Screw HD DIN. 912		See price list		
*	420 640 321	Taptite Screw M5 x 16				
	420 852 419	Starting Pulley				
	420 945 752	Lock Washer DIN. 128				
	420 841 520	Allen Screw M8 x 12				
	420 810 860	Flange Con.				
	420 860 950	Damper Ring				
	205 062 544	Socket Screw HD DIN. 912				
*	420 887 442	Rewind Starter				
	420 810 875	Starter Housing				
	420 939 115	Rewind Spring				
	420 852 284	Rope Sheave				
	412 500 100	Starter Rope				
	420 852 070	Key Clamp				
	420 852 291	Pawl				
	420 852 301	Pawl Lock				
	420 845 300	Circlip				
	420 938 986	Pawl Spring				
	420 945 770	Lock Ring				
	420 851 330	Clamp				
	420 241 236	Socket Screw M6 x 16				
	232 561 414	Stop Nut, Elastic DIN. 985				
	293 800 015	Loctite 242				
	413 711 400	Loctite 648				
	420 897 061	Silicone Grease				
	420 899 271	Grease				

Dealer # \_\_\_\_\_

Dealer name \_\_\_\_\_



## FAST MOVING PARTS MX Z 600

TO ALL U.S. DEALERS							
APPLICABLE ALSO ON SUMMIT 600	NEW 1999	P/N	DESCRIPTION	QTY	US DEALER	US RETAIL	TOTAL
<b>IGNITION SYSTEM</b>							
X	*	512 059 039	Ignition Coil			See price list	
<b>REWIND STARTER</b>							
X	*	420 887 442	Rewind Starter Assy			See price list	
<b>FUEL SYSTEM</b>							
X		414 872 100	Fuel Filter			See price list	
X	*	403 901 800	Fuel Pump				
X		572 100 900	Throttle Handle Housing				
X	*	515 175 290	Kill Switch				
X	*	512 058 902	Throttle Cable				
X	*	512 059 093	Choke Cable				
<b>CHAINCASE</b>							
X	*	504 151 776	Chaincase			See price list	
X		405 404 400	Ball Bearing 6205				
X		405 403 000	Needle Bearing				
X		405 408 500	Ball Bearing				
<b>DRIVE PULLEY</b>							
X	*	417 222 154	Drive Pulley Assy			See price list	
X	*	417 222 160	Fixed Flange				
X	*	417 222 049	Sliding Flange Assy				
X	*	417 003 801	Lever Assy				
	*	417 005 281	Ramp 281				
X		414 860 700	Drive Belt				
		504 149 100	Shim				
X		501 025 000	Flange				
X	*	501 026 300	Countershaft				
X		507 031 300	Brake Disk Assy				
		417 010 400	Fixed Flange Assy				
	*	417 126 343	Cam 50				
X		417 010 200	Fixed Flange				
X		414 918 000	Cam Slider Shoe				
<b>HYDRAULIC BRAKE &amp; BELT GUARD</b>							
X		507 031 300	Brake Disk Assy			See price list	
X		414 990 000	Brake Lining Set				
	*	417 300 002	Belt Guard Assy				
X	*	515 175 393	Switch				
		410 105 400	Dimmer Switch				
<b>STEERING SYSTEM</b>							
X		506 145 800	R.H. Steering Arm			See price list	
X		506 145 900	L.H. Steering Arm				
X		414 768 000	R.H. Ball Joint				
X		414 768 100	L.H. Ball Joint				
X		414 491 600	Steering Support				
	*	506 151 138	Handle Bar				
	*	506 151 141	Steering Pad				

Dealer # \_\_\_\_\_ Dealer name \_\_\_\_\_

TO ALL U.S. DEALERS							
APPLICABLE ALSO ON SUMMIT 600	NEW 1999	P/N	DESCRIPTION	QTY	US DEALER	US RETAIL	TOTAL
<b>FRONT SUSPENSION SYSTEM</b>							
X	*	505 070 189	Ski Liner		See price list		
X	*	505 070 055	Bridge Assy				
X		572 101 000	Plastic Handle				
X	*	860 501 900	Carbide Runner Kit				
X	*	506 151 233	Ski Stopper				
X	*	506 133 300	Spacer				
X	*	506 151 234	Ski Leg				
	*	506 150 700	R.H. Arm				
	*	506 150 800	L.H. Arm				
	*	505 070 216	Stabilizator				
	*	505 070 186	Front Shock				
	*	505 070 214	Upper Arm Assy				
	*	505 070 212	Lower Arm Assy				
X	*	505 070 010	Upper Arm Bracket				
X	*	505 070 011	Lower Arm Bracket				
<b>DRIVE AXLE &amp; TRACK</b>							
	*	570 212 600	Track Assy		See price list		
X		500 003 400	Guide Cleat				
X	*	501 027 400	Drive Axle				
X	*	504 151 781	Sprocket 9-Teeth				
<b>REAR SUSPENSION</b>							
	*	503 189 184	Runner (121 in)		See price list		
		560 103 300	Runner Shoe (121 in)				
X		572 097 712	Wheel 165 Assy				
X		572 097 612	Wheel 135				
		503 160 000	Wheel Support Axle				
		572 107 800	Wheel 165 Assy				
X		572 084 800	Reinforcement Stopper				
		503 189 171	Wheel 135 Assy				
	*	503 189 198	Reinforcement Plate				
<b>FRONT ARM (REAR SUSPENSION)</b>							
	*	503 189 185	Welded Front Arm		See price list		
X	*	503 188 938	Shaft				
	*	503 188 913	Shock				
X	*	503 188 930	Protector				
X		503 151 600	Axle				
		503 174 900	Lower Axle (shock support)				
	*	503 188 912	Rear Shock				
		503 158 500	Lever				
		503 158 600	Tie Rod Shaft				
		503 187 100	Tie Rod				

Dealer # \_\_\_\_\_ Dealer name \_\_\_\_\_

TO ALL U.S. DEALERS							
APPLICABLE ALSO ON SUMMIT 600	NEW 1999	P/N	DESCRIPTION	QTY	US DEALER	US RETAIL	TOTAL
<b>REAR ARM (REAR SUSPENSION)</b>							
X		503 169 200	Pivot Welded Arm		See price list		
X		503 154 703	Lower Axle Pivot				
X		503 144 300	Upper Axle				
X		503 168 700	Transversal Rear Axle				
	*	503 188 100	R.H. Spring				
	*	503 188 200	L.H. Spring				
X		572 091 400	Idler Wheel Assy				
	*	503 188 912	Rear Shock				
X	*	503 188 934	Spring Axle Guide				
		503 158 600	Tie Rod Shaft				
		503 187 100	Tie Rod				
	*	503 189 044	Pivot Block Assy				
<b>SEAT &amp; ACCESSORIES</b>							
X		414 513 600	Light Housing		See price list		
X		410 504 000	Tail Lamp Bulb				
X		414 513 700	Lens				
X		518 318 200	Rear Bumper				
X		572 092 100	Snow Guard				
		572 092 200	R.H. Molding				
		572 092 300	L.H. Molding				
<b>FRAME &amp; ACCESSORIES</b>							
	*	518 321 664	Tunnel		See price list		
X		518 320 506	R.H. Footrest Support				
X		518 320 507	L.H. Footrest Support				
X	*	518 319 722	R.H. Footrest				
X	*	518 319 723	L.H. Footrest				
<b>BOTTOM PAN</b>							
	*	572 110 100	Bottom Pan (yellow)		See price list		
	*	502 006 511	Bottom Pan Door (yellow)				
	*	502 006 535	Bumper (yellow)				
X	*	502 006 503	L.H. Support				
X	*	502 006 502	R.H. Support				
<b>CAB, CONSOLE</b>							
X	*	517 302 026	Center Grill		See price list		
X	*	517 302 028	R.H. Intermediate Grill				
X	*	517 302 031	L.H. Intermediate Grill				
X	*	517 302 034	R.H. Side Grill				
X	*	517 302 036	L.H. Side Grill				
X	*	517 302 003	Windshield Support				
X	*	517 302 022	Windshield (medium)				
X	*	517 302 023	Air Intake Plate				
X	*	517 302 024	R.H. Air Intake Grill				
X	*	517 302 025	L.H. Air Intake Grill				
X	*	517 302 129	Rope Guide				
<b>ELECTRICAL SYSTEM</b>							
X	*	515 175 254	Cable Support		See price list		
X	*	515 175 158	Headlamp Assy				

Dealer # \_\_\_\_\_ Dealer name \_\_\_\_\_

## FAST MOVING PARTS SUMMIT 600

TO ALL U.S. DEALERS							
APPLICABLE ALSO ON MX Z 600	NEW 1999	P/N	DESCRIPTION	QTY	US DEALER	US RETAIL	TOTAL
<b>IGNITION SYSTEM</b>							
X	*	512 059 039	Ignition Coil			See price list	
<b>REWIND STARTER</b>							
X	*	420 887 442	Rewind Starter Assy			See price list	
<b>FUEL SYSTEM</b>							
X		414 872 100	Fuel Filter			See price list	
X	*	403 901 800	Fuel Pump				
X		572 100 900	Throttle Handle Housing				
X	*	515 175 290	Kill Switch				
X	*	512 058 902	Throttle Cable				
X	*	512 059 093	Choke Cable				
<b>CHAINCASE</b>							
X	*	504 151 776	Chaincase			See price list	
X		405 404 400	Ball Bearing 6205				
X		405 403 000	Needle Bearing				
X		405 408 500	Ball Bearing				
<b>DRIVE PULLEY</b>							
X	*	417 222 154	Drive Pulley Assy			See price list	
X	*	417 222 160	Fixed Flange				
X	*	417 222 049	Sliding Flange Assy				
X		417 003 801	Lever Assy				
	*	417 005 294	Ramp 294				
X		414 860 700	Drive Belt				
X		501 025 000	Flange				
X		501 026 300	Countershaft				
X		507 031 300	Brake Disk				
X		417 010 200	Fixed Flange				
	*	417 126 337	Cam 47°				
X		414 918 000	Cam Slider Shoe				
<b>HYDRAULIC BRAKE &amp; BELT GUARD</b>							
X		507 031 300	Brake Disk			See price list	
X		414 990 000	Brake Lining Set				
	*	417 300 053	Belt Guard Assy				
X	*	515 175 393	Switch				
<b>STEERING SYSTEM</b>							
X		506 145 800	R.H. Steering Arm			See price list	
X		506 145 900	L.H. Steering Arm				
X		414 768 000	R.H. Ball Joint				
X		414 768 100	L.H. Ball Joint				
X		414 491 600	Steering Support				
	*	506 151 193	Handle Bar				
	*	506 151 154	Steering Pad				

Dealer # \_\_\_\_\_ Dealer name \_\_\_\_\_

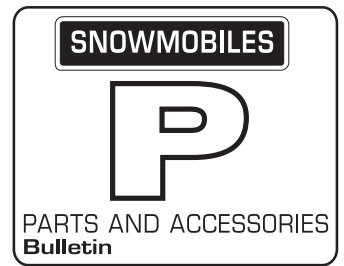
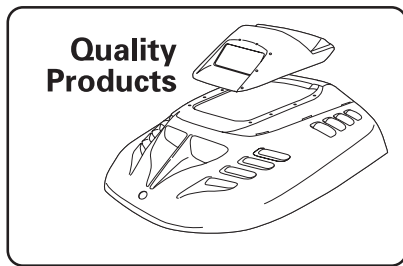
TO ALL U.S. DEALERS							
APPLICABLE ALSO ON MX Z 600	NEW 1999	P/N	DESCRIPTION	QTY	US DEALER	US RETAIL	TOTAL
<b>FRONT SUSPENSION SYSTEM</b>							
X	*	505 070 189	Ski Liner		See price list		
X	*	505 070 055	Bridge Assy				
X		572 101 000	Plastic Handle				
X	*	860 501 900	Carbide Runner Kit				
X	*	506 151 233	Ski Stopper				
X	*	506 133 300	Spacer				
X	*	506 151 234	Ski Leg				
	*	506 151 231	R.H. Arm				
	*	506 151 232	L.H. Arm				
	*	505 070 282	Stabilizator				
	*	415 105 700	Damper				
	*	505 070 022	Upper Arm Assy				
	*	505 070 026	Lower Arm Assy				
X	*	505 070 010	Upper Arm Bracket				
X	*	505 070 011	Lower Arm Bracket				
<b>DRIVE AXLE &amp; TRACK</b>							
		570 212 000	Track Assy		See price list		
X		500 003 400	Guide Cleat				
X	*	501 027 400	Drive Axle				
X	*	504 151 781	Sprocket 9-Teeth				
<b>REAR SUSPENSION</b>							
	*	503 189 199	Runner		See price list		
		560 103 500	Runner Shoe				
X		572 097 712	Wheel 165 Assy				
	*	503 188 997	Wheel 135 Assy				
		503 153 600	Wheel Support Axle				
		572 045 800	Wheel 165 Assy				
X		572 084 800	Reinforcement Stopper				
X		572 097 612	Wheel 135 Assy				
	*	503 189 197	Reinforcement Plate				
<b>FRONT ARM (REAR SUSPENSION)</b>							
	*	503 189 068	Front Arm		See price list		
X	*	503 188 938	Shaft				
	*	503 188 914	Center Shock				
X	*	503 188 930	Protector				
X		503 151 600	Axle				
		503 173 300	Shock Support				
	*	503 189 182	Rear Shock				
		572 034 000	Adjuster Knob				

Dealer # \_\_\_\_\_ Dealer name \_\_\_\_\_

TO ALL U.S. DEALERS							
APPLICABLE ALSO ON MX Z 600	NEW 1999	P/N	DESCRIPTION	QTY	US DEALER	US RETAIL	TOTAL
<b>REAR ARM (REAR SUSPENSION)</b>							
X		503 169 200	Pivot Arm		See price list		
X		503 154 703	Lower Axle Pivot				
		503 170 700	Rear Arm				
X		503 144 300	Upper Axle Pivot				
X		503 168 700	Rear Cross Shaft				
		414 943 500	R.H. Spring				
		414 943 600	L.H. Spring				
X		572 091 400	Wheel 155 Assy				
	*	503 189 182	Rear Shock				
X	*	503 188 934	Spring Axle Guide				
<b>SEAT &amp; ACCESSORIES</b>							
X		414 513 600	Light Housing		See price list		
X		410 504 000	Tail Lamp Bulb				
X		414 513 700	Lens				
X		518 318 200	Rear Bumper				
X		572 092 100	Snow Guard				
		572 097 300	R.H. Molding				
		572 097 400	L.H. Molding				
<b>FRAME &amp; ACCESSORIES</b>							
	*	518 321 644	Tunnel		See price list		
X		518 320 506	R.H. Footrest Support				
X		518 320 507	L.H. Footrest Support				
X	*	518 319 722	R.H. Footrest				
X	*	518 319 723	L.H. Footrest				
		518 319 405	Strip				
<b>BOTTOM PAN</b>							
	*	572 110 101	Bottom Pan (black)		See price list		
	*	502 006 506	Bottom Pan Door (black)				
	*	502 006 536	Bumper (black)				
X	*	502 006 503	L.H. Support				
X	*	502 006 502	R.H. Support				
<b>CAB, CONSOLE</b>							
X	*	517 302 026	Center Grill		See price list		
X	*	517 302 028	R.H. Intermediate Grill				
X	*	517 302 031	L.H. Intermediate Grill				
X	*	517 302 034	R.H. Side Grill				
X	*	517 302 036	L.H. Side Grill				
X	*	517 302 003	Windshield Support				
X	*	517 302 022	Windshield				
X	*	517 302 023	Air intake Plate				
X	*	517 302 024	R.H. Air Intake Grill				
X	*	517 302 025	L.H. Air Intake Grill				
X	*	517 302 129	Rope Guide				
<b>ELECTRICAL SYSTEM</b>							
X	*	515 175 254	Cable Support		See price list		
X	*	515 175 158	Headlamp Halogen Assy				

Dealer # \_\_\_\_\_ Dealer name \_\_\_\_\_

X: Boxes with this character signify that the part is common to both MX Z 600 and Summit 600.



Date: November 19, 1998

No. **99-102**

**TO ALL CANADIAN DEALERS**

**SUBJECT: Fast Moving Parts 1999  
MX Z 600 and Summit 600**

Snowmobile season is at our doorstep and customers will want parts for these new models.

To help you get ready for this beginning of season, we prepared a listing of fast moving parts, covering engine, transmission, suspension, body etc., for these new models.

**Please place your order using the attached forms and sent it to your respective order desk.**

**NOTE:** Remember that time is running fast; orders will be treated on a first come first served basis.

**NOTE:** In some cases in the list, prices are not known yet; a second printing will be made in December once we get them in.

*Parts catalogs* for these models will be available shortly; please note their P/N:

- 1999 MX Z 600, P/N 484 400 017
- 1999 Summit 600, P/N 484 400 018

## PARTS FOR 593 ENGINE

TO ALL CANADIAN DEALERS						
NEW 1999	P/N	DESCRIPTION	QTY	CDN DEALER	CDN RETAIL	TOTAL
*	420 888 203	Crankcase Assy				
*	420 841 316	Hex. Screw Collar M8 x 75 SW 11				
	420 940 636	Hex. Screw Collar M8 x 45 SW 12				
*	420 640 311	Hex. Screw Collar M6 x 45				
	420 941 646	Stud M10 - 23/17				
	420 956 510	Check Valve				
*	420 632 010	Dowel Pin				
	420 860 965	Cable Grommet				
*	420 874 360	T-Fitting				
	415 110 000	Hose				
	420 232 100	Ball Bearing (for crankcase)				
*	420 837 421	Water Pump/Oil Pump				
	420 230 195	Oil Seal (for water pump)				
	420 232 100	Ball Bearing (for water pump)				
	420 650 370	Oil Seal (for water pump)				
*	420 950 890	O-Ring (for water pump)				
	420 840 511	Allen Screw M5 x 16		See price list		
	420 227 945	Washer				
*	420 222 505	Water Impeller				
*	420 931 810	Gasket (for water pump)				
*	420 922 630	Water Pump Housing				
	420 240 031	Hex. Screw M6 x 25				
	420 230 400	O-Ring (for crankcase)				
*	420 888 260	Oil Pump Assy				
	420 941 925	Tapping Screw M5 x 16				
	414 413 800	Oil Line				
*	420 059 301	Short Block 593				
*	420 888 250	Crankshaft				
	420 827 445	Distance Ring				
*	420 832 590	Ball Bearing 6206 (for crankshaft)				
	420 827 050	Retaining Disk				
	420 427 684	Washer, Adjustable				
*	420 931 790	Oil Seal (for crankshaft)				

Dealer # \_\_\_\_\_

Dealer name \_\_\_\_\_



TO ALL CANADIAN DEALERS						
NEW 1999	P/N	DESCRIPTION	QTY	CDN DEALER	CDN RETAIL	TOTAL
	420 827 760	Distance Ring		See price list		
*	420 832 575	Ball Bearing 6207 (for crankshaft)				
*	420 931 450	Oil Seal (for crankshaft)				
	420 927 710	Retaining Disk				
	420 831 950	Oil Seal (for crankshaft)				
	420 246 015	Woodruff Key				
	420 945 759	Lock Washer 22 mm				
	420 842 230	Hex. Nut M22 x 1.5				
	420 832 425	Needle Bearing (for piston)				
*	420 886 685	Piston Assy (1 ring 75.89 mm)				
*	420 815 150	Semi Trapeze Ring 76.00 mm				
*	420 916 410	Gudgeon Pin				
*	420 845 102	Piston Circlip				
*	420 832 590	Ball Bearing 6206 (for crankshaft)				
	420 831 990	Oil Seal (for crankshaft)				
*	420 834 350	Central Gear				
*	420 931 580	Gasket 0.3 mm (for cylinder)				
*	420 931 581	Gasket 0.4 mm (for cylinder)				
*	420 931 582	Gasket 0.6 mm (for cylinder)				
*	420 923 435	Cylinder with Sleeve				
*	420 854 370	Exhaust Valve				
	420 430 110	O-Ring (for exhaust valve)				
*	420 250 239	Gasket (for exhaust valve)				
	420 854 265	Valve Housing				
	205 062 044	Socket Screw HD DIN. 912				
*	420 260 723	Bellows				
	420 838 253	Spring Clamp				
	420 854 447	Exhaust Valve				
*	290 239 048	Hose Spring				
	420 239 946	Spring				
	420 911 551	Valve Cover				
	420 241 220	Adjuster Screw				
	420 838 082	Spring Clip				
	420 841 996	Screw M8 x 68.5				

Dealer # \_\_\_\_\_

Dealer name \_\_\_\_\_

**TO ALL CANADIAN DEALERS**

NEW 1999	P/N	DESCRIPTION	QTY	CDN DEALER	CDN RETAIL	TOTAL
*	420 931 590	Rubber Ring		See price list		
	420 850 540	O-Ring (for cylinder head)				
*	420 923 450	Cylinder Head				
*	420 950 320	O-Ring (for cylinder head cover)				
	420 430 782	O-Ring (for cylinder head cover)				
*	420 923 460	Cylinder Head Cover				
	420 841 306	Hex. Screw Collar M8 x 65 SW 11				
	420 941 621	Hex Screw Collar M8 x 56.5				
	414 834 100	Thermostat				
	420 931 270	Sealing Ring				
	420 922 025	Bent Outlet Socket				
	420 941 250	Tapping Screw M6 x 20				
*	420 850 338	Gasket (for cylinder head cover)				
	420 922 062	Bent Outlet Socket				
	420 240 480	Plug Screw 1/8-27 NPT				
	420 941 451	Hex. Screw Collar M6 x 40				
*	420 250 015	Gasket Ring (for cylinder head)				
	420 841 921	Plug Screw M12 x 1.5				
	420 924 519	Reed Valve Assy				
	420 924 532	Pedal Reed				
	420 924 539	Pedal Reed Stop				
	420 941 215	Oval Head Screw M3 x 5				
*	420 867 805	Carburetor Socket				
	420 941 925	Tapping Screw M5 x 16				
*	420 851 440	Clamp				
*	420 867 815	Intake Resonator				
*	420 931 610	Gasket (for exhaust manifold)				
*	420 979 542	Exhaust Manifold				
*	420 923 441	Cylinder Sleeve				
*	420 888 580	Engine Gasket Set				
*	420 888 585	Cylinder Gasket Set				
*	410 922 914	Magneto - Gen.				
*	410 922 915	Stator Plate				
*	410 922 906	Flywheel				

Dealer # \_\_\_\_\_

Dealer name \_\_\_\_\_

TO ALL CANADIAN DEALERS						
NEW 1999	P/N	DESCRIPTION	QTY	CDN DEALER	CDN RETAIL	TOTAL
	222 963 065	Socket Screw HD DIN. 912		See price list		
*	420 640 321	Taptite Screw M5 x 16				
	420 852 419	Starting Pulley				
	420 945 752	Lock Washer DIN. 128				
	420 841 520	Allen Screw M8 x 12				
	420 810 860	Flange Con.				
	420 860 950	Damper Ring				
	205 062 544	Socket Screw HD DIN. 912				
*	420 887 442	Rewind Starter				
	420 810 875	Starter Housing				
	420 939 115	Rewind Spring				
	420 852 284	Rope Sheave				
	412 500 100	Starter Rope				
	420 852 070	Key Clamp				
	420 852 291	Pawl				
	420 852 301	Pawl Lock				
	420 845 300	Circlip				
	420 938 986	Pawl Spring				
	420 945 770	Lock Ring				
	420 851 330	Clamp				
	420 241 236	Socket Screw M6 x 16				
	232 561 414	Stop Nut, Elastic DIN. 985				
	293 800 015	Loctite 242				
	413 711 400	Loctite 648				
	420 897 061	Silicone Grease				
	420 899 271	Grease				

Dealer # \_\_\_\_\_

Dealer name \_\_\_\_\_

## FAST MOVING PARTS MX Z 600

TO ALL CANADIAN DEALERS							
APPLICABLE ALSO ON SUMMIT 600	NEW 1999	P/N	DESCRIPTION	QTY	CDN DEALER	CDN RETAIL	TOTAL
<b>IGNITION SYSTEM</b>							
X	*	512 059 039	Ignition Coil			See price list	
<b>REWIND STARTER</b>							
X	*	420 887 442	Rewind Starter Assy			See price list	
<b>FUEL SYSTEM</b>							
X		414 872 100	Fuel Filter			See price list	
X	*	403 901 800	Fuel Pump				
X		572 100 900	Throttle Handle Housing				
X	*	515 175 290	Kill Switch				
X	*	512 058 902	Throttle Cable				
X	*	512 059 093	Choke Cable				
<b>CHAINCASE</b>							
X	*	504 151 776	Chaincase			See price list	
X		405 404 400	Ball Bearing 6205				
X		405 403 000	Needle Bearing				
X		405 408 500	Ball Bearing				
<b>DRIVE PULLEY</b>							
X	*	417 222 154	Drive Pulley Assy			See price list	
X	*	417 222 160	Fixed Flange				
X	*	417 222 049	Sliding Flange Assy				
X	*	417 003 801	Lever Assy				
	*	417 005 281	Ramp 281				
X		414 860 700	Drive Belt				
		504 149 100	Shim				
X		501 025 000	Flange				
X	*	501 026 300	Countershaft				
X		507 031 300	Brake Disk Assy				
		417 010 400	Fixed Flange Assy				
	*	417 126 343	Cam 50				
X		417 010 200	Fixed Flange				
X		414 918 000	Cam Slider Shoe				
<b>HYDRAULIC BRAKE &amp; BELT GUARD</b>							
X		507 031 300	Brake Disk Assy			See price list	
X		414 990 000	Brake Lining Set				
	*	417 300 002	Belt Guard Assy				
X	*	515 175 393	Switch				
		410 105 400	Dimmer Switch				
<b>STEERING SYSTEM</b>							
X		506 145 800	R.H. Steering Arm			See price list	
X		506 145 900	L.H. Steering Arm				
X		414 768 000	R.H. Ball Joint				
X		414 768 100	L.H. Ball Joint				
X		414 491 600	Steering Support				
	*	506 151 138	Handle Bar				
	*	506 151 141	Steering Pad				

Dealer # \_\_\_\_\_ Dealer name \_\_\_\_\_

TO ALL CANADIAN DEALERS							
APPLICABLE ALSO ON SUMMIT 600	NEW 1999	P/N	DESCRIPTION	QTY	CDN DEALER	CDN RETAIL	TOTAL
<b>FRONT SUSPENSION SYSTEM</b>							
X	*	505 070 189	Ski Liner		See price list		
X	*	505 070 055	Bridge Assy				
X		572 101 000	Plastic Handle				
X	*	860 501 900	Carbide Runner Kit				
X	*	506 151 233	Ski Stopper				
X	*	506 133 300	Spacer				
X	*	506 151 234	Ski Leg				
	*	506 150 700	R.H. Arm				
	*	506 150 800	L.H. Arm				
	*	505 070 216	Stabilizator				
	*	505 070 186	Front Shock				
	*	505 070 214	Upper Arm Assy				
	*	505 070 212	Lower Arm Assy				
X	*	505 070 010	Upper Arm Bracket				
X	*	505 070 011	Lower Arm Bracket				
<b>DRIVE AXLE &amp; TRACK</b>							
	*	570 212 600	Track Assy		See price list		
X		500 003 400	Guide Cleat				
X	*	501 027 400	Drive Axle				
X	*	504 151 781	Sprocket 9-Teeth				
<b>REAR SUSPENSION</b>							
	*	503 189 184	Runner (121 in)		See price list		
		560 103 300	Runner Shoe (121 in)				
X		572 097 712	Wheel 165 Assy				
X		572 097 612	Wheel 135				
		503 160 000	Wheel Support Axle				
		572 107 800	Wheel 165 Assy				
X		572 084 800	Reinforcement Stopper				
		503 189 171	Wheel 135 Assy				
	*	503 189 198	Reinforcement Plate				
<b>FRONT ARM (REAR SUSPENSION)</b>							
	*	503 189 185	Welded Front Arm		See price list		
X	*	503 188 938	Shaft				
	*	503 188 913	Shock				
X	*	503 188 930	Protector				
X		503 151 600	Axle				
		503 174 900	Lower Axle (shock support)				
	*	503 188 912	Rear Shock				
		503 158 500	Lever				
		503 158 600	Tie Rod Shaft				
		503 187 100	Tie Rod				

Dealer # \_\_\_\_\_ Dealer name \_\_\_\_\_

TO ALL CANADIAN DEALERS							
APPLICABLE ALSO ON SUMMIT 600	NEW 1999	P/N	DESCRIPTION	QTY	CDN DEALER	CDN RETAIL	TOTAL
<b>REAR ARM (REAR SUSPENSION)</b>							
X		503 169 200	Pivot Welded Arm		See price list		
X		503 154 703	Lower Axle Pivot				
X		503 144 300	Upper Axle				
X		503 168 700	Transversal Rear Axle				
	*	503 188 100	R.H. Spring				
	*	503 188 200	L.H. Spring				
X		572 091 400	Idler Wheel Assy				
	*	503 188 912	Rear Shock				
X	*	503 188 934	Spring Axle Guide				
		503 158 600	Tie Rod Shaft				
		503 187 100	Tie Rod				
	*	503 189 044	Pivot Block Assy				
<b>SEAT &amp; ACCESSORIES</b>							
X		414 513 600	Light Housing		See price list		
X		410 504 000	Tail Lamp Bulb				
X		414 513 700	Lens				
X		518 318 200	Rear Bumper				
X		572 092 100	Snow Guard				
		572 092 200	R.H. Molding				
		572 092 300	L.H. Molding				
<b>FRAME &amp; ACCESSORIES</b>							
	*	518 321 664	Tunnel		See price list		
X		518 320 506	R.H. Footrest Support				
X		518 320 507	L.H. Footrest Support				
X	*	518 319 722	R.H. Footrest				
X	*	518 319 723	L.H. Footrest				
<b>BOTTOM PAN</b>							
	*	572 110 100	Bottom Pan (yellow)		See price list		
	*	502 006 511	Bottom Pan Door (yellow)				
	*	502 006 535	Bumper (yellow)				
X	*	502 006 503	L.H. Support				
X	*	502 006 502	R.H. Support				
<b>CAB, CONSOLE</b>							
X	*	517 302 026	Center Grill		See price list		
X	*	517 302 028	R.H. Intermediate Grill				
X	*	517 302 031	L.H. Intermediate Grill				
X	*	517 302 034	R.H. Side Grill				
X	*	517 302 036	L.H. Side Grill				
X	*	517 302 003	Windshield Support				
X	*	517 302 022	Windshield (medium)				
X	*	517 302 023	Air Intake Plate				
X	*	517 302 024	R.H. Air Intake Grill				
X	*	517 302 025	L.H. Air Intake Grill				
X	*	517 302 129	Rope Guide				
<b>ELECTRICAL SYSTEM</b>							
X	*	515 175 254	Cable Support		See price list		
X	*	515 175 158	Headlamp Assy				

Dealer # \_\_\_\_\_ Dealer name \_\_\_\_\_

## FAST MOVING PARTS SUMMIT 600

TO ALL CANADIAN DEALERS							
APPLICABLE ALSO ON MX Z 600	NEW 1999	P/N	DESCRIPTION	QTY	CDN DEALER	CDN RETAIL	TOTAL
<b>IGNITION SYSTEM</b>							
X	*	512 059 039	Ignition Coil			See price list	
<b>REWIND STARTER</b>							
X	*	420 887 442	Rewind Starter Assy			See price list	
<b>FUEL SYSTEM</b>							
X		414 872 100	Fuel Filter			See price list	
X	*	403 901 800	Fuel Pump				
X		572 100 900	Throttle Handle Housing				
X	*	515 175 290	Kill Switch				
X	*	512 058 902	Throttle Cable				
X	*	512 059 093	Choke Cable				
<b>CHAINCASE</b>							
X	*	504 151 776	Chaincase			See price list	
X		405 404 400	Ball Bearing 6205				
X		405 403 000	Needle Bearing				
X		405 408 500	Ball Bearing				
<b>DRIVE PULLEY</b>							
X	*	417 222 154	Drive Pulley Assy			See price list	
X	*	417 222 160	Fixed Flange				
X	*	417 222 049	Sliding Flange Assy				
X		417 003 801	Lever Assy				
	*	417 005 294	Ramp 294				
X		414 860 700	Drive Belt				
X		501 025 000	Flange				
X		501 026 300	Countershaft				
X		507 031 300	Brake Disk				
X		417 010 200	Fixed Flange				
	*	417 126 337	Cam 47°				
X		414 918 000	Cam Slider Shoe				
<b>HYDRAULIC BRAKE &amp; BELT GUARD</b>							
X		507 031 300	Brake Disk			See price list	
X		414 990 000	Brake Lining Set				
	*	417 300 053	Belt Guard Assy				
X	*	515 175 393	Switch				
<b>STEERING SYSTEM</b>							
X		506 145 800	R.H. Steering Arm			See price list	
X		506 145 900	L.H. Steering Arm				
X		414 768 000	R.H. Ball Joint				
X		414 768 100	L.H. Ball Joint				
X		414 491 600	Steering Support				
	*	506 151 193	Handle Bar				
	*	506 151 154	Steering Pad				

Dealer # \_\_\_\_\_ Dealer name \_\_\_\_\_

TO ALL CANADIAN DEALERS							
APPLICABLE ALSO ON MX Z 600	NEW 1999	P/N	DESCRIPTION	QTY	CDN DEALER	CDN RETAIL	TOTAL
<b>FRONT SUSPENSION SYSTEM</b>							
X	*	505 070 189	Ski Liner		See price list		
X	*	505 070 055	Bridge Assy				
X		572 101 000	Plastic Handle				
X	*	860 501 900	Carbide Runner Kit				
X	*	506 151 233	Ski Stopper				
X	*	506 133 300	Spacer				
X	*	506 151 234	Ski Leg				
	*	506 151 231	R.H. Arm				
	*	506 151 232	L.H. Arm				
	*	505 070 282	Stabilizator				
	*	415 105 700	Damper				
	*	505 070 022	Upper Arm Assy				
	*	505 070 026	Lower Arm Assy				
X	*	505 070 010	Upper Arm Bracket				
X	*	505 070 011	Lower Arm Bracket				
<b>DRIVE AXLE &amp; TRACK</b>							
		570 212 000	Track Assy		See price list		
X		500 003 400	Guide Cleat				
X	*	501 027 400	Drive Axle				
X	*	504 151 781	Sprocket 9-Teeth				
<b>REAR SUSPENSION</b>							
	*	503 189 199	Runner		See price list		
		560 103 500	Runner Shoe				
X		572 097 712	Wheel 165 Assy				
	*	503 188 997	Wheel 135 Assy				
		503 153 600	Wheel Support Axle				
		572 045 800	Wheel 165 Assy				
X		572 084 800	Reinforcement Stopper				
X		572 097 612	Wheel 135 Assy				
	*	503 189 197	Reinforcement Plate				
<b>FRONT ARM (REAR SUSPENSION)</b>							
	*	503 189 068	Front Arm		See price list		
X	*	503 188 938	Shaft				
	*	503 188 914	Center Shock				
X	*	503 188 930	Protector				
X		503 151 600	Axle				
		503 173 300	Shock Support				
	*	503 189 182	Rear Shock				
		572 034 000	Adjuster Knob				

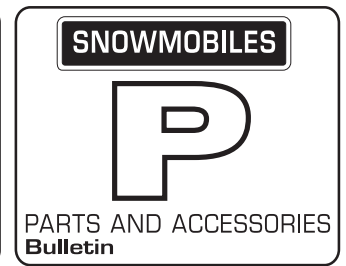
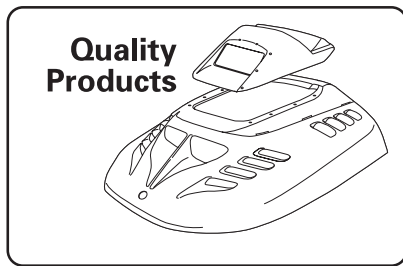
Dealer # \_\_\_\_\_ Dealer name \_\_\_\_\_



TO ALL CANADIAN DEALERS							
APPLICABLE ALSO ON MX Z 600	NEW 1999	P/N	DESCRIPTION	QTY	CDN DEALER	CDN RETAIL	TOTAL
<b>REAR ARM (REAR SUSPENSION)</b>							
X		503 169 200	Pivot Arm		See price list		
X		503 154 703	Lower Axle Pivot				
		503 170 700	Rear Arm				
X		503 144 300	Upper Axle Pivot				
X		503 168 700	Rear Cross Shaft				
		414 943 500	R.H. Spring				
		414 943 600	L.H. Spring				
X		572 091 400	Wheel 155 Assy				
	*	503 189 182	Rear Shock				
X	*	503 188 934	Spring Axle Guide				
<b>SEAT &amp; ACCESSORIES</b>							
X		414 513 600	Light Housing		See price list		
X		410 504 000	Tail Lamp Bulb				
X		414 513 700	Lens				
X		518 318 200	Rear Bumper				
X		572 092 100	Snow Guard				
		572 097 300	R.H. Molding				
		572 097 400	L.H. Molding				
<b>FRAME &amp; ACCESSORIES</b>							
	*	518 321 644	Tunnel		See price list		
X		518 320 506	R.H. Footrest Support				
X		518 320 507	L.H. Footrest Support				
X	*	518 319 722	R.H. Footrest				
X	*	518 319 723	L.H. Footrest				
		518 319 405	Strip				
<b>BOTTOM PAN</b>							
	*	572 110 101	Bottom Pan (black)		See price list		
	*	502 006 506	Bottom Pan Door (black)				
	*	502 006 536	Bumper (black)				
X	*	502 006 503	L.H. Support				
X	*	502 006 502	R.H. Support				
<b>CAB, CONSOLE</b>							
X	*	517 302 026	Center Grill		See price list		
X	*	517 302 028	R.H. Intermediate Grill				
X	*	517 302 031	L.H. Intermediate Grill				
X	*	517 302 034	R.H. Side Grill				
X	*	517 302 036	L.H. Side Grill				
X	*	517 302 003	Windshield Support				
X	*	517 302 022	Windshield				
X	*	517 302 023	Air intake Plate				
X	*	517 302 024	R.H. Air Intake Grill				
X	*	517 302 025	L.H. Air Intake Grill				
X	*	517 302 129	Rope Guide				
<b>ELECTRICAL SYSTEM</b>							
X	*	515 175 254	Cable Support		See price list		
X	*	515 175 158	Headlamp Halogen Assy				

Dealer # \_\_\_\_\_ Dealer name \_\_\_\_\_

X: Boxes with this character signify that the part is common to both MX Z 600 and Summit 600.



Date: November 19, 1998

No. **99-102**

**TO ALL INTERNATIONAL DISTRIBUTORS**

**SUBJECT: Fast Moving Parts 1999  
MX Z 600 and Summit 600**

Snowmobile season is at our doorstep and customers will want parts for these new models.

To help you get ready for this beginning of season, we prepared a listing of fast moving parts, covering engine, transmission, suspension, body etc., for these new models.

**Please place your order using the attached forms and sent it to your respective order desk.**

**NOTE:** Remember that time is running fast; orders will be treated on a first come first served basis.

**NOTE:** In some cases in the list, prices are not known yet; a second printing will be made in December once we get them in.

*Parts catalogs* for these models will be available shortly; please note their P/N:

- 1999 MX Z 600, P/N 484 400 017
- 1999 Summit 600, P/N 484 400 018

## PARTS FOR 593 ENGINE

TO ALL INTERNATIONAL DISTRIBUTORS					
NEW 1999	P/N	DESCRIPTION	QTY	INT. DIST.	TOTAL
*	420 888 203	Crankcase Assy		See price list	
*	420 841 316	Hex. Screw Collar M8 x 75 SW 11			
	420 940 636	Hex. Screw Collar M8 x 45 SW 12			
*	420 640 311	Hex. Screw Collar M6 x 45			
	420 941 646	Stud M10 - 23/17			
	420 956 510	Check Valve			
*	420 632 010	Dowel Pin			
	420 860 965	Cable Grommet			
*	420 874 360	T-Fitting			
	415 110 000	Hose			
	420 232 100	Ball Bearing (for crankcase)			
*	420 837 421	Water Pump/Oil Pump			
	420 230 195	Oil Seal (for water pump)			
	420 232 100	Ball Bearing (for water pump)			
	420 650 370	Oil Seal (for water pump)			
*	420 950 890	O-Ring (for water pump)			
	420 840 511	Allen Screw M5 x 16			
	420 227 945	Washer			
*	420 222 505	Water Impeller			
*	420 931 810	Gasket (for water pump)			
*	420 922 630	Water Pump Housing			
	420 240 031	Hex. Screw M6 x 25			
	420 230 400	O-Ring (for crankcase)			
*	420 888 260	Oil Pump Assy			
	420 941 925	Tapping Screw M5 x 16			
	414 413 800	Oil Line			
*	420 059 301	Short Block 593			
*	420 888 250	Crankshaft			
	420 827 445	Distance Ring			
*	420 832 590	Ball Bearing 6206 (for crankshaft)			
	420 827 050	Retaining Disk			
	420 427 684	Washer, Adjustable			
*	420 931 790	Oil Seal (for crankshaft)			

Dealer # \_\_\_\_\_

Dealer name \_\_\_\_\_

TO ALL INTERNATIONAL DISTRIBUTORS					
NEW 1999	P/N	DESCRIPTION	QTY	INT. DIST.	TOTAL
	420 827 760	Distance Ring		See price list	
*	420 832 575	Ball Bearing 6207 (for crankshaft)			
*	420 931 450	Oil Seal (for crankshaft)			
	420 927 710	Retaining Disk			
	420 831 950	Oil Seal (for crankshaft)			
	420 246 015	Woodruff Key			
	420 945 759	Lock Washer 22 mm			
	420 842 230	Hex. Nut M22 x 1.5			
	420 832 425	Needle Bearing (for piston)			
*	420 886 685	Piston Assy (1 ring 75.89 mm)			
*	420 815 150	Semi Trapeze Ring 76.00 mm			
*	420 916 410	Gudgeon Pin			
*	420 845 102	Piston Circlip			
*	420 832 590	Ball Bearing 6206 (for crankshaft)			
	420 831 990	Oil Seal (for crankshaft)			
*	420 834 350	Central Gear			
*	420 931 580	Gasket 0.3 mm (for cylinder)			
*	420 931 581	Gasket 0.4 mm (for cylinder)			
*	420 931 582	Gasket 0.6 mm (for cylinder)			
*	420 923 435	Cylinder with Sleeve			
*	420 854 370	Exhaust Valve			
	420 430 110	O-Ring (for exhaust valve)			
*	420 250 239	Gasket (for exhaust valve)			
	420 854 265	Valve Housing			
	205 062 044	Socket Screw HD DIN. 912			
*	420 260 723	Bellows			
	420 838 253	Spring Clamp			
	420 854 447	Exhaust Valve			
*	290 239 048	Hose Spring			
	420 239 946	Spring			
	420 911 551	Valve Cover			
	420 241 220	Adjuster Screw			
	420 838 082	Spring Clip			
	420 841 996	Screw M8 x 68.5			

Dealer # \_\_\_\_\_

Dealer name \_\_\_\_\_

**TO ALL INTERNATIONAL DISTRIBUTORS**

NEW 1999	P/N	DESCRIPTION	QTY	INT. DIST.	TOTAL
*	420 931 590	Rubber Ring		See price list	
	420 850 540	O-Ring (for cylinder head)			
*	420 923 450	Cylinder Head			
*	420 950 320	O-Ring (for cylinder head cover)			
	420 430 782	O-Ring (for cylinder head cover)			
*	420 923 460	Cylinder Head Cover			
	420 841 306	Hex. Screw Collar M8 x 65 SW 11			
	420 941 621	Hex Screw Collar M8 x 56.5			
	414 834 100	Thermostat			
	420 931 270	Sealing Ring			
	420 922 025	Bent Outlet Socket			
	420 941 250	Tapping Screw M6 x 20			
*	420 850 338	Gasket (for cylinder head cover)			
	420 922 062	Bent Outlet Socket			
	420 240 480	Plug Screw 1/8-27 NPT			
	420 941 451	Hex. Screw Collar M6 x 40			
*	420 250 015	Gasket Ring (for cylinder head)			
	420 841 921	Plug Screw M12 x 1.5			
	420 924 519	Reed Valve Assy			
	420 924 532	Pedal Reed			
	420 924 539	Pedal Reed Stop			
	420 941 215	Oval Head Screw M3 x 5			
*	420 867 805	Carburetor Socket			
	420 941 925	Tapping Screw M5 x 16			
*	420 851 440	Clamp			
*	420 867 815	Intake Resonator			
*	420 931 610	Gasket (for exhaust manifold)			
*	420 979 542	Exhaust Manifold			
*	420 923 441	Cylinder Sleeve			
*	420 888 580	Engine Gasket Set			
*	420 888 585	Cylinder Gasket Set			
*	410 922 914	Magneto - Gen.			
*	410 922 915	Stator Plate			
*	410 922 906	Flywheel			

Dealer # \_\_\_\_\_

Dealer name \_\_\_\_\_

TO ALL INTERNATIONAL DISTRIBUTORS					
NEW 1999	P/N	DESCRIPTION	QTY	INT. DIST.	TOTAL
	222 963 065	Socket Screw HD DIN. 912		See price list	
*	420 640 321	Taptite Screw M5 x 16			
	420 852 419	Starting Pulley			
	420 945 752	Lock Washer DIN. 128			
	420 841 520	Allen Screw M8 x 12			
	420 810 860	Flange Con.			
	420 860 950	Damper Ring			
	205 062 544	Socket Screw HD DIN. 912			
*	420 887 442	Rewind Starter			
	420 810 875	Starter Housing			
	420 939 115	Rewind Spring			
	420 852 284	Rope Sheave			
	412 500 100	Starter Rope			
	420 852 070	Key Clamp			
	420 852 291	Pawl			
	420 852 301	Pawl Lock			
	420 845 300	Circlip			
	420 938 986	Pawl Spring			
	420 945 770	Lock Ring			
	420 851 330	Clamp			
	420 241 236	Socket Screw M6 x 16			
	232 561 414	Stop Nut, Elastic DIN. 985			
	293 800 015	Loctite 242			
	413 711 400	Loctite 648			
	420 897 061	Silicone Grease			
	420 899 271	Grease			

Dealer # \_\_\_\_\_

Dealer name \_\_\_\_\_

## FAST MOVING PARTS MX Z 600

TO ALL INTERNATIONAL DISTRIBUTORS						
APPLICABLE ALSO ON SUMMIT 600	NEW 1999	P/N	DESCRIPTION	QTY	INT. DIST.	TOTAL
<b>IGNITION SYSTEM</b>						
X	*	512 059 039	Ignition Coil			
<b>REWIND STARTER</b>						
X	*	420 887 442	Rewind Starter Assy			
<b>FUEL SYSTEM</b>						
X		414 872 100	Fuel Filter			
X	*	403 901 800	Fuel Pump			
X		572 100 900	Throttle Handle Housing			
X	*	515 175 290	Kill Switch			
X	*	512 058 902	Throttle Cable			
X	*	512 059 093	Choke Cable			
<b>CHAINCASE</b>						
X	*	504 151 776	Chaincase			
X		405 404 400	Ball Bearing 6205			
X		405 403 000	Needle Bearing			
X		405 408 500	Ball Bearing			
<b>DRIVE PULLEY</b>						
X	*	417 222 154	Drive Pulley Assy			
X	*	417 222 160	Fixed Flange			
X	*	417 222 049	Sliding Flange Assy			
X	*	417 003 801	Lever Assy			
	*	417 005 281	Ramp 281			
X		414 860 700	Drive Belt		See price list	
		504 149 100	Shim			
X		501 025 000	Flange			
X	*	501 026 300	Countershaft			
X		507 031 300	Brake Disk Assy			
		417 010 400	Fixed Flange Assy			
	*	417 126 343	Cam 50			
X		417 010 200	Fixed Flange			
X		414 918 000	Cam Slider Shoe			
<b>HYDRAULIC BRAKE &amp; BELT GUARD</b>						
X		507 031 300	Brake Disk Assy			
X		414 990 000	Brake Lining Set			
	*	417 300 002	Belt Guard Assy			
X	*	515 175 393	Switch			
		410 105 400	Dimmer Switch			
<b>STEERING SYSTEM</b>						
X		506 145 800	R.H. Steering Arm			
X		506 145 900	L.H. Steering Arm			
X		414 768 000	R.H. Ball Joint			
X		414 768 100	L.H. Ball Joint			
X		414 491 600	Steering Support			
	*	506 151 138	Handle Bar			
	*	506 151 141	Steering Pad			

Dealer # \_\_\_\_\_

Dealer name \_\_\_\_\_

TO ALL INTERNATIONAL DISTRIBUTORS						
APPLICABLE ALSO ON SUMMIT 600	NEW 1999	P/N	DESCRIPTION	QTY	INT. DIST.	TOTAL
<b>FRONT SUSPENSION SYSTEM</b>						
X	*	505 070 189	Ski Liner			
X	*	505 070 055	Bridge Assy			
X		572 101 000	Plastic Handle			
X	*	860 501 900	Carbide Runner Kit			
X	*	506 151 233	Ski Stopper			
X	*	506 133 300	Spacer			
X	*	506 151 234	Ski Leg			
	*	506 150 700	R.H. Arm			
	*	506 150 800	L.H. Arm			
	*	505 070 216	Stabilizator			
	*	505 070 186	Front Shock			
	*	505 070 214	Upper Arm Assy			
	*	505 070 212	Lower Arm Assy			
X	*	505 070 010	Upper Arm Bracket			
X	*	505 070 011	Lower Arm Bracket			
<b>DRIVE AXLE &amp; TRACK</b>						
	*	570 212 600	Track Assy			
X		500 003 400	Guide Cleat			
X	*	501 027 400	Drive Axle			
X	*	504 151 781	Sprocket 9-Teeth			
<b>REAR SUSPENSION</b>						
	*	503 189 184	Runner (121 in)			
		560 103 300	Runner Shoe (121 in)			
X		572 097 712	Wheel 165 Assy			
X		572 097 612	Wheel 135			
		503 160 000	Wheel Support Axle			
		572 107 800	Wheel 165 Assy			
X		572 084 800	Reinforcement Stopper			
		503 189 171	Wheel 135 Assy			
	*	503 189 198	Reinforcement Plate			
<b>FRONT ARM (REAR SUSPENSION)</b>						
	*	503 189 185	Welded Front Arm			
X	*	503 188 938	Shaft			
	*	503 188 913	Shock			
X	*	503 188 930	Protector			
X		503 151 600	Axle			
		503 174 900	Lower Axle (shock support)			
	*	503 188 912	Rear Shock			
		503 158 500	Lever			
		503 158 600	Tie Rod Shaft			
		503 187 100	Tie Rod			

See price list

Dealer # \_\_\_\_\_

Dealer name \_\_\_\_\_



TO ALL INTERNATIONAL DISTRIBUTORS						
APPLICABLE ALSO ON SUMMIT 600	NEW 1999	P/N	DESCRIPTION	QTY	INT. DIST.	TOTAL
<b>REAR ARM (REAR SUSPENSION)</b>						
X		503 169 200	Pivot Welded Arm			
X		503 154 703	Lower Axle Pivot			
X		503 144 300	Upper Axle			
X		503 168 700	Transversal Rear Axle			
	*	503 188 100	R.H. Spring			
	*	503 188 200	L.H. Spring			
X		572 091 400	Idler Wheel Assy			
	*	503 188 912	Rear Shock			
X	*	503 188 934	Spring Axle Guide			
		503 158 600	Tie Rod Shaft			
		503 187 100	Tie Rod			
	*	503 189 044	Pivot Block Assy			
<b>SEAT &amp; ACCESSORIES</b>						
X		414 513 600	Light Housing			
X		410 504 000	Tail Lamp Bulb			
X		414 513 700	Lens			
X		518 318 200	Rear Bumper			
X		572 092 100	Snow Guard			
		572 092 200	R.H. Molding			
		572 092 300	L.H. Molding			
<b>FRAME &amp; ACCESSORIES</b>						
	*	518 321 664	Tunnel			
X		518 320 506	R.H. Footrest Support		See price list	
X		518 320 507	L.H. Footrest Support			
X	*	518 319 722	R.H. Footrest			
X	*	518 319 723	L.H. Footrest			
<b>BOTTOM PAN</b>						
	*	572 110 100	Bottom Pan (yellow)			
	*	502 006 511	Bottom Pan Door (yellow)			
	*	502 006 535	Bumper (yellow)			
X	*	502 006 503	L.H. Support			
X	*	502 006 502	R.H. Support			
<b>CAB, CONSOLE</b>						
X	*	517 302 026	Center Grill			
X	*	517 302 028	R.H. Intermediate Grill			
X	*	517 302 031	L.H. Intermediate Grill			
X	*	517 302 034	R.H. Side Grill			
X	*	517 302 036	L.H. Side Grill			
X	*	517 302 003	Windshield Support			
X	*	517 302 022	Windshield (medium)			
X	*	517 302 023	Air Intake Plate			
X	*	517 302 024	R.H. Air Intake Grill			
X	*	517 302 025	L.H. Air Intake Grill			
X	*	517 302 129	Rope Guide			
<b>ELECTRICAL SYSTEM</b>						
X	*	515 175 254	Cable Support			
X	*	515 175 158	Headlamp Assy			

Dealer # \_\_\_\_\_

Dealer name \_\_\_\_\_

## FAST MOVING PARTS SUMMIT 600

TO ALL INTERNATIONAL DISTRIBUTORS						
APPLICABLE ALSO ON MX Z 600	NEW 1999	P/N	DESCRIPTION	QTY	INT. DIST.	TOTAL
<b>IGNITION SYSTEM</b>						
X	*	512 059 039	Ignition Coil			
<b>REWIND STARTER</b>						
X	*	420 887 442	Rewind Starter Assy			
<b>FUEL SYSTEM</b>						
X		414 872 100	Fuel Filter			
X	*	403 901 800	Fuel Pump			
X		572 100 900	Throttle Handle Housing			
X	*	515 175 290	Kill Switch			
X	*	512 058 902	Throttle Cable			
X	*	512 059 093	Choke Cable			
<b>CHAINCASE</b>						
X	*	504 151 776	Chaincase			
X		405 404 400	Ball Bearing 6205			
X		405 403 000	Needle Bearing			
X		405 408 500	Ball Bearing			
<b>DRIVE PULLEY</b>						
X	*	417 222 154	Drive Pulley Assy			
X	*	417 222 160	Fixed Flange			
X	*	417 222 049	Sliding Flange Assy			
X		417 003 801	Lever Assy			
	*	417 005 294	Ramp 294			
X		414 860 700	Drive Belt			
X		501 025 000	Flange			
X		501 026 300	Countershaft			
X		507 031 300	Brake Disk			
X		417 010 200	Fixed Flange			
	*	417 126 337	Cam 47°			
X		414 918 000	Cam Slider Shoe			
<b>HYDRAULIC BRAKE &amp; BELT GUARD</b>						
X		507 031 300	Brake Disk			
X		414 990 000	Brake Lining Set			
	*	417 300 053	Belt Guard Assy			
X	*	515 175 393	Switch			
<b>STEERING SYSTEM</b>						
X		506 145 800	R.H. Steering Arm			
X		506 145 900	L.H. Steering Arm			
X		414 768 000	R.H. Ball Joint			
X		414 768 100	L.H. Ball Joint			
X		414 491 600	Steering Support			
	*	506 151 193	Handle Bar			
	*	506 151 154	Steering Pad			

See  
price list

Dealer # \_\_\_\_\_

Dealer name \_\_\_\_\_

**TO ALL INTERNATIONAL DISTRIBUTORS**

APPLICABLE ALSO ON MX Z 600	NEW 1999	P/N	DESCRIPTION	QTY	INT. DIST.	TOTAL
<b>FRONT SUSPENSION SYSTEM</b>						
X	*	505 070 189	Ski Liner			
X	*	505 070 055	Bridge Assy			
X		572 101 000	Plastic Handle			
X	*	860 501 900	Carbide Runner Kit			
X	*	506 151 233	Ski Stopper			
X	*	506 133 300	Spacer			
X	*	506 151 234	Ski Leg			
	*	506 151 231	R.H. Arm			
	*	506 151 232	L.H. Arm			
	*	505 070 282	Stabilizator			
	*	415 105 700	Damper			
	*	505 070 022	Upper Arm Assy			
	*	505 070 026	Lower Arm Assy			
X	*	505 070 010	Upper Arm Bracket			
X	*	505 070 011	Lower Arm Bracket			
<b>DRIVE AXLE &amp; TRACK</b>						
		570 212 000	Track Assy			
X		500 003 400	Guide Cleat			
X	*	501 027 400	Drive Axle			
X	*	504 151 781	Sprocket 9-Teeth			
<b>REAR SUSPENSION</b>						
	*	503 189 199	Runner			
		560 103 500	Runner Shoe			
X		572 097 712	Wheel 165 Assy			
	*	503 188 997	Wheel 135 Assy			
		503 153 600	Wheel Support Axle			
		572 045 800	Wheel 165 Assy			
X		572 084 800	Reinforcement Stopper			
X		572 097 612	Wheel 135 Assy			
	*	503 189 197	Reinforcement Plate			
<b>FRONT ARM (REAR SUSPENSION)</b>						
	*	503 189 068	Front Arm			
X	*	503 188 938	Shaft			
	*	503 188 914	Center Shock			
X	*	503 188 930	Protector			
X		503 151 600	Axle			
		503 173 300	Shock Support			
	*	503 189 182	Rear Shock			
		572 034 000	Adjuster Knob			

See  
price list

Dealer # \_\_\_\_\_

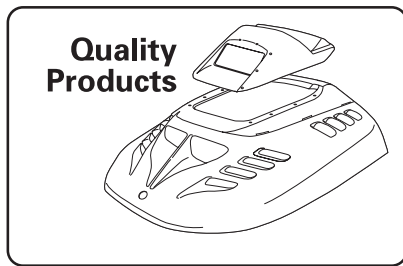
Dealer name \_\_\_\_\_

TO ALL INTERNATIONAL DISTRIBUTORS						
APPLICABLE ALSO ON MX Z 600	NEW 1999	P/N	DESCRIPTION	QTY	INT. DIST.	TOTAL
<b>REAR ARM (REAR SUSPENSION)</b>						
X		503 169 200	Pivot Arm			
X		503 154 703	Lower Axle Pivot			
		503 170 700	Rear Arm			
X		503 144 300	Upper Axle Pivot			
X		503 168 700	Rear Cross Shaft			
		414 943 500	R.H. Spring			
		414 943 600	L.H. Spring			
X		572 091 400	Wheel 155 Assy			
	*	503 189 182	Rear Shock			
X	*	503 188 934	Spring Axle Guide			
<b>SEAT &amp; ACCESSORIES</b>						
X		414 513 600	Light Housing			
X		410 504 000	Tail Lamp Bulb			
X		414 513 700	Lens			
X		518 318 200	Rear Bumper			
X		572 092 100	Snow Guard			
		572 097 300	R.H. Molding			
		572 097 400	L.H. Molding			
<b>FRAME &amp; ACCESSORIES</b>						
	*	518 321 644	Tunnel			
X		518 320 506	R.H. Footrest Support			
X		518 320 507	L.H. Footrest Support			
X	*	518 319 722	R.H. Footrest			
X	*	518 319 723	L.H. Footrest			
		518 319 405	Strip			
<b>BOTTOM PAN</b>						
	*	572 110 101	Bottom Pan (black)			
	*	502 006 506	Bottom Pan Door (black)			
	*	502 006 536	Bumper (black)			
X	*	502 006 503	L.H. Support			
X	*	502 006 502	R.H. Support			
<b>CAB, CONSOLE</b>						
X	*	517 302 026	Center Grill			
X	*	517 302 028	R.H. Intermediate Grill			
X	*	517 302 031	L.H. Intermediate Grill			
X	*	517 302 034	R.H. Side Grill			
X	*	517 302 036	L.H. Side Grill			
X	*	517 302 003	Windshield Support			
X	*	517 302 022	Windshield			
X	*	517 302 023	Air intake Plate			
X	*	517 302 024	R.H. Air Intake Grill			
X	*	517 302 025	L.H. Air Intake Grill			
X	*	517 302 129	Rope Guide			
<b>ELECTRICAL SYSTEM</b>						
X	*	515 175 254	Cable Support			
X	*	515 175 158	Headlamp Halogen Assy			

See  
price list

Dealer # \_\_\_\_\_ Dealer name \_\_\_\_\_

X: Boxes with this character signify that the part is common to both MX Z 600 and Summit 600.



Date: November 19, 1998

No. **99-102**

**TO ALL CANADIAN DISTRIBUTORS**

**SUBJECT: Fast Moving Parts 1999  
MX Z 600 and Summit 600**

Snowmobile season is at our doorstep and customers will want parts for these new models.

To help you get ready for this beginning of season, we prepared a listing of fast moving parts, covering engine, transmission, suspension, body etc., for these new models.

**Please place your order using the attached forms and sent it to your respective order desk.**

**NOTE:** Remember that time is running fast; orders will be treated on a first come first served basis.

**NOTE:** In some cases in the list, prices are not known yet; a second printing will be made in December once we get them in.

*Parts catalogs* for these models will be available shortly; please note their P/N:

- 1999 MX Z 600, P/N 484 400 017
- 1999 Summit 600, P/N 484 400 018

## PARTS FOR 593 ENGINE

TO ALL CANADIAN DISTRIBUTORS					
NEW 1999	P/N	DESCRIPTION	QTY	CDN DIST.	TOTAL
*	420 888 203	Crankcase Assy			
*	420 841 316	Hex. Screw Collar M8 x 75 SW 11			
	420 940 636	Hex. Screw Collar M8 x 45 SW 12			
*	420 640 311	Hex. Screw Collar M6 x 45			
	420 941 646	Stud M10 - 23/17			
	420 956 510	Check Valve			
*	420 632 010	Dowel Pin			
	420 860 965	Cable Grommet			
*	420 874 360	T-Fitting			
	415 110 000	Hose			
	420 232 100	Ball Bearing (for crankcase)			
*	420 837 421	Water Pump/Oil Pump			
	420 230 195	Oil Seal (for water pump)			
	420 232 100	Ball Bearing (for water pump)			
	420 650 370	Oil Seal (for water pump)			
*	420 950 890	O-Ring (for water pump)			
	420 840 511	Allen Screw M5 x 16			
	420 227 945	Washer			
*	420 222 505	Water Impeller			
*	420 931 810	Gasket (for water pump)			
*	420 922 630	Water Pump Housing			
	420 240 031	Hex. Screw M6 x 25			
	420 230 400	O-Ring (for crankcase)			
*	420 888 260	Oil Pump Assy			
	420 941 925	Tapping Screw M5 x 16			
	414 413 800	Oil Line			
*	420 059 301	Short Block 593			
*	420 888 250	Crankshaft			
	420 827 445	Distance Ring			
*	420 832 590	Ball Bearing 6206 (for crankshaft)			
	420 827 050	Retaining Disk			
	420 427 684	Washer, Adjustable			
*	420 931 790	Oil Seal (for crankshaft)			

Dealer # \_\_\_\_\_

Dealer name \_\_\_\_\_

**TO ALL CANADIAN DISTRIBUTORS**

NEW 1999	P/N	DESCRIPTION	QTY	CDN DIST.	TOTAL
	420 827 760	Distance Ring			
*	420 832 575	Ball Bearing 6207 (for crankshaft)			
*	420 931 450	Oil Seal (for crankshaft)			
	420 927 710	Retaining Disk			
	420 831 950	Oil Seal (for crankshaft)			
	420 246 015	Woodruff Key			
	420 945 759	Lock Washer 22 mm			
	420 842 230	Hex. Nut M22 x 1.5			
	420 832 425	Needle Bearing (for piston)			
*	420 886 685	Piston Assy (1 ring 75.89 mm)			
*	420 815 150	Semi Trapeze Ring 76.00 mm			
*	420 916 410	Gudgeon Pin			
*	420 845 102	Piston Circlip			
*	420 832 590	Ball Bearing 6206 (for crankshaft)			
	420 831 990	Oil Seal (for crankshaft)			
*	420 834 350	Central Gear			
*	420 931 580	Gasket 0.3 mm (for cylinder)			
*	420 931 581	Gasket 0.4 mm (for cylinder)			
*	420 931 582	Gasket 0.6 mm (for cylinder)			
*	420 923 435	Cylinder with Sleeve			
*	420 854 370	Exhaust Valve			
	420 430 110	O-Ring (for exhaust valve)			
*	420 250 239	Gasket (for exhaust valve)			
	420 854 265	Valve Housing			
	205 062 044	Socket Screw HD DIN. 912			
*	420 260 723	Bellows			
	420 838 253	Spring Clamp			
	420 854 447	Exhaust Valve			
*	290 239 048	Hose Spring			
	420 239 946	Spring			
	420 911 551	Valve Cover			
	420 241 220	Adjuster Screw			
	420 838 082	Spring Clip			
	420 841 996	Screw M8 x 68.5			

Dealer # \_\_\_\_\_

Dealer name \_\_\_\_\_

**TO ALL CANADIAN DISTRIBUTORS**

NEW 1999	P/N	DESCRIPTION	QTY	CDN DIST.	TOTAL
*	420 931 590	Rubber Ring			
	420 850 540	O-Ring (for cylinder head)			
*	420 923 450	Cylinder Head			
*	420 950 320	O-Ring (for cylinder head cover)			
	420 430 782	O-Ring (for cylinder head cover)			
*	420 923 460	Cylinder Head Cover			
	420 841 306	Hex. Screw Collar M8 x 65 SW 11			
	420 941 621	Hex Screw Collar M8 x 56.5			
	414 834 100	Thermostat			
	420 931 270	Sealing Ring			
	420 922 025	Bent Outlet Socket			
	420 941 250	Tapping Screw M6 x 20			
*	420 850 338	Gasket (for cylinder head cover)			
	420 922 062	Bent Outlet Socket			
	420 240 480	Plug Screw 1/8-27 NPT			
	420 941 451	Hex. Screw Collar M6 x 40			
*	420 250 015	Gasket Ring (for cylinder head)			
	420 841 921	Plug Screw M12 x 1.5			
	420 924 519	Reed Valve Assy			
	420 924 532	Pedal Reed			
	420 924 539	Pedal Reed Stop			
	420 941 215	Oval Head Screw M3 x 5			
*	420 867 805	Carburetor Socket			
	420 941 925	Tapping Screw M5 x 16			
*	420 851 440	Clamp			
*	420 867 815	Intake Resonator			
*	420 931 610	Gasket (for exhaust manifold)			
*	420 979 542	Exhaust Manifold			
*	420 923 441	Cylinder Sleeve			
*	420 888 580	Engine Gasket Set			
*	420 888 585	Cylinder Gasket Set			
*	410 922 914	Magneto - Gen.			
*	410 922 915	Stator Plate			
*	410 922 906	Flywheel			

Dealer # \_\_\_\_\_

Dealer name \_\_\_\_\_



**TO ALL CANADIAN DISTRIBUTORS**

NEW 1999	P/N	DESCRIPTION	QTY	CDN DIST.	TOTAL
	222 963 065	Socket Screw HD DIN. 912			
*	420 640 321	Taptite Screw M5 x 16			
	420 852 419	Starting Pulley			
	420 945 752	Lock Washer DIN. 128			
	420 841 520	Allen Screw M8 x 12			
	420 810 860	Flange Con.			
	420 860 950	Damper Ring			
	205 062 544	Socket Screw HD DIN. 912			
*	420 887 442	Rewind Starter			
	420 810 875	Starter Housing			
	420 939 115	Rewind Spring			
	420 852 284	Rope Sheave			
	412 500 100	Starter Rope			
	420 852 070	Key Clamp			
	420 852 291	Pawl			
	420 852 301	Pawl Lock			
	420 845 300	Circlip			
	420 938 986	Pawl Spring			
	420 945 770	Lock Ring			
	420 851 330	Clamp			
	420 241 236	Socket Screw M6 x 16			
	232 561 414	Stop Nut, Elastic DIN. 985			
	293 800 015	Loctite 242			
	413 711 400	Loctite 648			
	420 897 061	Silicone Grease			
	420 899 271	Grease			

Dealer # \_\_\_\_\_

Dealer name \_\_\_\_\_

## FAST MOVING PARTS MX Z 600

TO ALL CANADIAN DISTRIBUTORS						
APPLICABLE ALSO ON SUMMIT 600	NEW 1999	P/N	DESCRIPTION	QTY	CDN DIST.	TOTAL
<b>IGNITION SYSTEM</b>						
X	*	512 059 039	Ignition Coil			
<b>REWIND STARTER</b>						
X	*	420 887 442	Rewind Starter Assy			
<b>FUEL SYSTEM</b>						
X		414 872 100	Fuel Filter			
X	*	403 901 800	Fuel Pump			
X		572 100 900	Throttle Handle Housing			
X	*	515 175 290	Kill Switch			
X	*	512 058 902	Throttle Cable			
X	*	512 059 093	Choke Cable			
<b>CHAINCASE</b>						
X	*	504 151 776	Chaincase			
X		405 404 400	Ball Bearing 6205			
X		405 403 000	Needle Bearing			
X		405 408 500	Ball Bearing			
<b>DRIVE PULLEY</b>						
X	*	417 222 154	Drive Pulley Assy			
X	*	417 222 160	Fixed Flange			
X	*	417 222 049	Sliding Flange Assy			
X	*	417 003 801	Lever Assy			
	*	417 005 281	Ramp 281			
X		414 860 700	Drive Belt			
		504 149 100	Shim			
X		501 025 000	Flange			
X	*	501 026 300	Countershaft			
X		507 031 300	Brake Disk Assy			
		417 010 400	Fixed Flange Assy			
	*	417 126 343	Cam 50			
X		417 010 200	Fixed Flange			
X		414 918 000	Cam Slider Shoe			
<b>HYDRAULIC BRAKE &amp; BELT GUARD</b>						
X		507 031 300	Brake Disk Assy			
X		414 990 000	Brake Lining Set			
	*	417 300 002	Belt Guard Assy			
X	*	515 175 393	Switch			
		410 105 400	Dimmer Switch			
<b>STEERING SYSTEM</b>						
X		506 145 800	R.H. Steering Arm			
X		506 145 900	L.H. Steering Arm			
X		414 768 000	R.H. Ball Joint			
X		414 768 100	L.H. Ball Joint			
X		414 491 600	Steering Support			
	*	506 151 138	Handle Bar			
	*	506 151 141	Steering Pad			

Dealer # \_\_\_\_\_

Dealer name \_\_\_\_\_

**TO ALL CANADIAN DISTRIBUTORS**

APPLICABLE ALSO ON SUMMIT 600	NEW 1999	P/N	DESCRIPTION	QTY	CDN DIST.	TOTAL
<b>FRONT SUSPENSION SYSTEM</b>						
X	*	505 070 189	Ski Liner			
X	*	505 070 055	Bridge Assy			
X		572 101 000	Plastic Handle			
X	*	860 501 900	Carbide Runner Kit			
X	*	506 151 233	Ski Stopper			
X	*	506 133 300	Spacer			
X	*	506 151 234	Ski Leg			
	*	506 150 700	R.H. Arm			
	*	506 150 800	L.H. Arm			
	*	505 070 216	Stabilizator			
	*	505 070 186	Front Shock			
	*	505 070 214	Upper Arm Assy			
	*	505 070 212	Lower Arm Assy			
X	*	505 070 010	Upper Arm Bracket			
X	*	505 070 011	Lower Arm Bracket			
<b>DRIVE AXLE &amp; TRACK</b>						
	*	570 212 600	Track Assy			
X		500 003 400	Guide Cleat			
X	*	501 027 400	Drive Axle			
X	*	504 151 781	Sprocket 9-Teeth			
<b>REAR SUSPENSION</b>						
	*	503 189 184	Runner (121 in)			
		560 103 300	Runner Shoe (121 in)			
X		572 097 712	Wheel 165 Assy			
X		572 097 612	Wheel 135			
		503 160 000	Wheel Support Axle			
		572 107 800	Wheel 165 Assy			
X		572 084 800	Reinforcement Stopper			
		503 189 171	Wheel 135 Assy			
	*	503 189 198	Reinforcement Plate			
<b>FRONT ARM (REAR SUSPENSION)</b>						
	*	503 189 185	Welded Front Arm			
X	*	503 188 938	Shaft			
	*	503 188 913	Shock			
X	*	503 188 930	Protector			
X		503 151 600	Axle			
		503 174 900	Lower Axle (shock support)			
	*	503 188 912	Rear Shock			
		503 158 500	Lever			
		503 158 600	Tie Rod Shaft			
		503 187 100	Tie Rod			

Dealer # \_\_\_\_\_

Dealer name \_\_\_\_\_

TO ALL CANADIAN DISTRIBUTORS						
APPLICABLE ALSO ON SUMMIT 600	NEW 1999	P/N	DESCRIPTION	QTY	CDN DIST.	TOTAL
<b>REAR ARM (REAR SUSPENSION)</b>						
X		503 169 200	Pivot Welded Arm			
X		503 154 703	Lower Axle Pivot			
X		503 144 300	Upper Axle			
X		503 168 700	Transversal Rear Axle			
	*	503 188 100	R.H. Spring			
	*	503 188 200	L.H. Spring			
X		572 091 400	Idler Wheel Assy			
	*	503 188 912	Rear Shock			
X	*	503 188 934	Spring Axle Guide			
		503 158 600	Tie Rod Shaft			
		503 187 100	Tie Rod			
	*	503 189 044	Pivot Block Assy			
<b>SEAT &amp; ACCESSORIES</b>						
X		414 513 600	Light Housing			
X		410 504 000	Tail Lamp Bulb			
X		414 513 700	Lens			
X		518 318 200	Rear Bumper			
X		572 092 100	Snow Guard			
		572 092 200	R.H. Molding			
		572 092 300	L.H. Molding			
<b>FRAME &amp; ACCESSORIES</b>						
	*	518 321 664	Tunnel			
X		518 320 506	R.H. Footrest Support			
X		518 320 507	L.H. Footrest Support			
X	*	518 319 722	R.H. Footrest			
X	*	518 319 723	L.H. Footrest			
<b>BOTTOM PAN</b>						
	*	572 110 100	Bottom Pan (yellow)			
	*	502 006 511	Bottom Pan Door (yellow)			
	*	502 006 535	Bumper (yellow)			
X	*	502 006 503	L.H. Support			
X	*	502 006 502	R.H. Support			
<b>CAB, CONSOLE</b>						
X	*	517 302 026	Center Grill			
X	*	517 302 028	R.H. Intermediate Grill			
X	*	517 302 031	L.H. Intermediate Grill			
X	*	517 302 034	R.H. Side Grill			
X	*	517 302 036	L.H. Side Grill			
X	*	517 302 003	Windshield Support			
X	*	517 302 022	Windshield (medium)			
X	*	517 302 023	Air Intake Plate			
X	*	517 302 024	R.H. Air Intake Grill			
X	*	517 302 025	L.H. Air Intake Grill			
X	*	517 302 129	Rope Guide			
<b>ELECTRICAL SYSTEM</b>						
X	*	515 175 254	Cable Support			
X	*	515 175 158	Headlamp Assy			

Dealer # \_\_\_\_\_

Dealer name \_\_\_\_\_

## FAST MOVING PARTS SUMMIT 600

TO ALL CANADIAN DISTRIBUTORS						
APPLICABLE ALSO ON MX Z 600	NEW 1999	P/N	DESCRIPTION	QTY	CDN DIST.	TOTAL
<b>IGNITION SYSTEM</b>						
X	*	512 059 039	Ignition Coil			
<b>REWIND STARTER</b>						
X	*	420 887 442	Rewind Starter Assy			
<b>FUEL SYSTEM</b>						
X		414 872 100	Fuel Filter			
X	*	403 901 800	Fuel Pump			
X		572 100 900	Throttle Handle Housing			
X	*	515 175 290	Kill Switch			
X	*	512 058 902	Throttle Cable			
X	*	512 059 093	Choke Cable			
<b>CHAINCASE</b>						
X	*	504 151 776	Chaincase			
X		405 404 400	Ball Bearing 6205			
X		405 403 000	Needle Bearing			
X		405 408 500	Ball Bearing			
<b>DRIVE PULLEY</b>						
X	*	417 222 154	Drive Pulley Assy			
X	*	417 222 160	Fixed Flange			
X	*	417 222 049	Sliding Flange Assy			
X		417 003 801	Lever Assy			
	*	417 005 294	Ramp 294			
X		414 860 700	Drive Belt			
X		501 025 000	Flange			
X		501 026 300	Countershaft			
X		507 031 300	Brake Disk			
X		417 010 200	Fixed Flange			
	*	417 126 337	Cam 47°			
X		414 918 000	Cam Slider Shoe			
<b>HYDRAULIC BRAKE &amp; BELT GUARD</b>						
X		507 031 300	Brake Disk			
X		414 990 000	Brake Lining Set			
	*	417 300 053	Belt Guard Assy			
X	*	515 175 393	Switch			
<b>STEERING SYSTEM</b>						
X		506 145 800	R.H. Steering Arm			
X		506 145 900	L.H. Steering Arm			
X		414 768 000	R.H. Ball Joint			
X		414 768 100	L.H. Ball Joint			
X		414 491 600	Steering Support			
	*	506 151 193	Handle Bar			
	*	506 151 154	Steering Pad			

Dealer # \_\_\_\_\_

Dealer name \_\_\_\_\_

TO ALL CANADIAN DISTRIBUTORS						
APPLICABLE ALSO ON MX Z 600	NEW 1999	P/N	DESCRIPTION	QTY	CDN DIST.	TOTAL
<b>FRONT SUSPENSION SYSTEM</b>						
X	*	505 070 189	Ski Liner			
X	*	505 070 055	Bridge Assy			
X		572 101 000	Plastic Handle			
X	*	860 501 900	Carbide Runner Kit			
X	*	506 151 233	Ski Stopper			
X	*	506 133 300	Spacer			
X	*	506 151 234	Ski Leg			
	*	506 151 231	R.H. Arm			
	*	506 151 232	L.H. Arm			
	*	505 070 282	Stabilizator			
	*	415 105 700	Damper			
	*	505 070 022	Upper Arm Assy			
	*	505 070 026	Lower Arm Assy			
X	*	505 070 010	Upper Arm Bracket			
X	*	505 070 011	Lower Arm Bracket			
<b>DRIVE AXLE &amp; TRACK</b>						
		570 212 000	Track Assy			
X		500 003 400	Guide Cleat			
X	*	501 027 400	Drive Axle			
X	*	504 151 781	Sprocket 9-Teeth			
<b>REAR SUSPENSION</b>						
	*	503 189 199	Runner			
		560 103 500	Runner Shoe			
X		572 097 712	Wheel 165 Assy			
	*	503 188 997	Wheel 135 Assy			
		503 153 600	Wheel Support Axle			
		572 045 800	Wheel 165 Assy			
X		572 084 800	Reinforcement Stopper			
X		572 097 612	Wheel 135 Assy			
	*	503 189 197	Reinforcement Plate			
<b>FRONT ARM (REAR SUSPENSION)</b>						
	*	503 189 068	Front Arm			
X	*	503 188 938	Shaft			
	*	503 188 914	Center Shock			
X	*	503 188 930	Protector			
X		503 151 600	Axle			
		503 173 300	Shock Support			
	*	503 189 182	Rear Shock			
		572 034 000	Adjuster Knob			

Dealer # \_\_\_\_\_

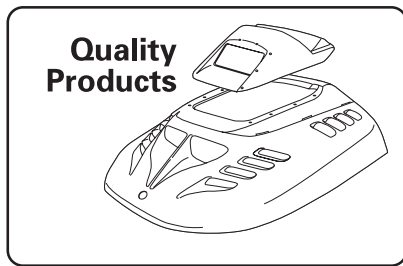
Dealer name \_\_\_\_\_

TO ALL CANADIAN DISTRIBUTORS						
APPLICABLE ALSO ON MX Z 600	NEW 1999	P/N	DESCRIPTION	QTY	CDN DIST.	TOTAL
<b>REAR ARM (REAR SUSPENSION)</b>						
X		503 169 200	Pivot Arm			
X		503 154 703	Lower Axle Pivot			
		503 170 700	Rear Arm			
X		503 144 300	Upper Axle Pivot			
X		503 168 700	Rear Cross Shaft			
		414 943 500	R.H. Spring			
		414 943 600	L.H. Spring			
X		572 091 400	Wheel 155 Assy			
	*	503 189 182	Rear Shock			
X	*	503 188 934	Spring Axle Guide			
<b>SEAT &amp; ACCESSORIES</b>						
X		414 513 600	Light Housing			
X		410 504 000	Tail Lamp Bulb			
X		414 513 700	Lens			
X		518 318 200	Rear Bumper			
X		572 092 100	Snow Guard			
		572 097 300	R.H. Molding			
		572 097 400	L.H. Molding			
<b>FRAME &amp; ACCESSORIES</b>						
	*	518 321 644	Tunnel			
X		518 320 506	R.H. Footrest Support			
X		518 320 507	L.H. Footrest Support			
X	*	518 319 722	R.H. Footrest			
X	*	518 319 723	L.H. Footrest			
		518 319 405	Strip			
<b>BOTTOM PAN</b>						
	*	572 110 101	Bottom Pan (black)			
	*	502 006 506	Bottom Pan Door (black)			
	*	502 006 536	Bumper (black)			
X	*	502 006 503	L.H. Support			
X	*	502 006 502	R.H. Support			
<b>CAB, CONSOLE</b>						
X	*	517 302 026	Center Grill			
X	*	517 302 028	R.H. Intermediate Grill			
X	*	517 302 031	L.H. Intermediate Grill			
X	*	517 302 034	R.H. Side Grill			
X	*	517 302 036	L.H. Side Grill			
X	*	517 302 003	Windshield Support			
X	*	517 302 022	Windshield			
X	*	517 302 023	Air intake Plate			
X	*	517 302 024	R.H. Air Intake Grill			
X	*	517 302 025	L.H. Air Intake Grill			
X	*	517 302 129	Rope Guide			
<b>ELECTRICAL SYSTEM</b>						
X	*	515 175 254	Cable Support			
X	*	515 175 158	Headlamp Halogen Assy			

Dealer # \_\_\_\_\_

Dealer name \_\_\_\_\_

X: Boxes with this character signify that the part is common to both MX Z 600 and Summit 600.



Date: November 25, 1998

No. **99-103**

**TO ALL CANADIAN DEALERS**

**SUBJECT: Inventory Clearance Sale**

Bombardier, as part of its inventory management policy, is reducing the quantity of certain items by offering them at drastically reduced prices (as shown on the attached listing).

Quantities are limited, so please take advantage right now as we will proceed on a "first come-first served" basis and no back-orders will be retained.

Please note that prices apply only to stock presently in inventory.

**To benefit from this special, please fax your order at our order desk at 1-800-361-7143.**



## INVENTORY CLEARANCE ORDER FORM

P/N	DESCRIPTION	DEALER US	RETAIL US	AVAILABLE STOCK	QTY
<b>ENGINE</b>					
400 407 100	Engine 467	MX/Grand Touring	470 '95	See price list	2
400 407 500	Engine 454	MX Z 440	'96		1
400 506 100	Engine 582	Grand Touring	580 '95		1
400 506 600	Engine 503	Skandic 500	'96		1
<b>DRIVE PULLEY</b>					
417 201 400	Drive Pulley	Formula Mach 1/Formula Mach 1	XTC '90	See price list	1
417 201 900	Drive Pulley	Safari LC '90; Safari GLX '90-'91; Safari LCE '91			1
417 202 100	Drive Pulley	Formula MX XTC	'91		2
417 202 200	Drive Pulley	Formula Plus/Formula Plus	XTC '91		2
417 203 300	Drive Pulley	Formula Mach 1 XTC	'92		8
417 204 400	Drive Pulley	Formula Plus X	'93		1
417 204 500	Drive Pulley	Formula MX Z	'93		2
417 205 400	Drive Pulley	Safari Rally E	'94		1
417 208 100	Drive Pulley	Grand Touring	580 '95		2
417 208 200	Drive Pulley	Formula STX	'95		3
417 210 800	Drive Pulley	Formula STX	'96		4
417 212 200	Drive Pulley	Formula SL	'96		15
581 099 000	Drive Pulley	Tundra/Tundra LT	'93		1
<b>FRONT MEMBER</b>					
518 187 400	Front Member (black)	Cheyenne	'91	See price list	3
518 199 300	Front Member (black)	Safari LE '92; Safari L/Skandic 377 '92-'94; Safari deluxe '93-'94			6
518 199 500	Front Member (black)	Skandic II 377	'92-'94		8
518 209 200	Front Member (black)	Safari Rally	'93-'94		2
518 209 500	Front Member (black)	Skandic 503	'93-'94		3
518 300 700	Front Member (red)	Formula Plus/Formula Plus E/ Formula Plus XTC	'93		1
518 307 700	Front Member (black)	Grand Touring/Grand Touring	XTC '94		3
518 308 300	Front Member (black)	Grand Touring SE/Mach 1	'94		6
518 313 041	Front Member (welded)	Formula SS/Formula STX/Formula Z/ Formula STX LT/Grand Touring 580	'96		37
518 313 042	Front Member (welded)	Formula SLS/Grand Touring	500 '96		9
518 313 055	Front Member (welded)	1996			9
580 565 700	Front Member (red)	Formula Plus/Formula Plus	LT '90		3

Dealer no. \_\_\_\_\_ Dealer name \_\_\_\_\_

P/N	DESCRIPTION	DEALER US	RETAIL US	AVAILABLE STOCK	QTY
<b>CARBURETOR</b>					
403 106 000	Carburetor VM-34-256	See price list		1	
403 106 900	Carburetor VM-40-24 MAG			2	
403 107 500	Carburetor VM-34-320			3	
403 107 600	Carburetor VM-34-321			3	
403 109 600	Carburetor VM-34-372 PTO			4	
403 110 100	Carburetor VM-34-378			5	
403 110 400	Carburetor VM-34 PTO			3	
403 110 500	Carburetor VM-34			2	
403 111 500	Carburetor VM-30			3	
403 111 800	Carburetor VM-34 MAG			11	
403 111 900	Carburetor VM-40 PTO HAC			4	
403 112 000	Carburetor VM-40 MAG HAC			7	
403 112 800	Carburetor VM-34 PTO			1	
403 112 900	Carburetor VM-34 MAG			2	
403 113 200	Carburetor VM-40 PTO HAC			10	
403 113 900	Carburetor VM-40 MAG			4	
403 114 800	Carburetor VM-34 PTO			5	
403 114 900	Carburetor VM-34 MAG			15	
403 115 000	Carburetor VM-38 MAG			10	
403 115 100	Carburetor VM-38 PTO			3	
403 115 400	Carburetor VM-38 PTO			9	
403 115 500	Carburetor VM-38 MAG			9	
403 116 000	Carburetor VM-40 PTO			24	
403 116 100	Carburetor VM-40 MAG			3	
403 116 500	Carburetor VM-38 MAG			3	
403 116 600	Carburetor VM-34 PTO			27	
403 116 700	Carburetor VM-34 MAG			14	
403 117 800	Carburetor VM-38 HAC			36	
403 118 300	Carburetor VM-34 PTO			20	
403 118 400	Carburetor VM-34 MAG			5	
403 119 000	Carburetor VM-40 PTO			5	
403 119 100	Carburetor VM-40 MAG			1	
403 119 800	Carburetor VM-38 PTO			6	
403 119 900	Carburetor VM-38 MAG			10	
403 120 100	Carburetor VM-34 MAG			27	
403 120 200	Carburetor VM-38 PTO			150	
403 120 300	Carburetor VM-38 MAG			136	
403 120 800	Carburetor VM-40			72	
403 123 800	Carburetor VM-34 PTO			5	
403 124 400	Carburetor VM-40 PTO			11	
403 124 600	Carburetor VM-40 PTO HAC	11			
403 125 300	Carburetor VM-34 MAG	10			
403 125 800	Carburetor VM-38 PTO HAC	9			
403 126 000	Carburetor VM-38 PTO	7			
403 126 700	Carburetor VM-38 PTO	19			
403 126 800	Carburetor VM-38 MAG	41			

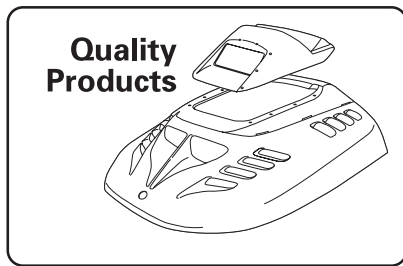
Dealer no. \_\_\_\_\_ Dealer name \_\_\_\_\_

P/N	DESCRIPTION	DEALER US	RETAIL US	AVAILABLE STOCK	QTY
<b>FORMING FRAME</b>					
518 182 700	Forming Frame (black)	Formula MX/MX LT '89	See price list	8	
518 183 000	Forming Frame (black)	Scout '91-'92		3	
518 183 100	Forming Frame (black)	Escapade		7	
518 183 300	Forming Frame (black)	Stratos, Saga, Voyageur		13	
518 184 600	Forming Frame (black)	Safari LC '90; Safari LCE '91-'92		16	
518 187 500	Forming Frame	Cheyenne '91		6	
518 187 700	Forming Frame	Safari GLX '91-'92		4	
518 199 600	Forming Frame	Formula MX '92		4	
518 199 700	Forming Frame (red)	Formula Plus/Formula Plus E/ Formula Plus X '92		11	
518 199 800	Forming Frame (red)	Formula Plus XTC '92		7	
518 199 900	Forming Frame (black)	Formula Mach 1 XTC '92		10	
518 300 000	Forming Frame (black)	Formula MX XTC R/ Formula Mach 1 XTC '93		8	
518 301 800	Forming Frame (black)	Grand Touring '93		5	
518 303 200	Forming Frame (red)	Formula Plus EFI '93		9	
518 304 202	Forming Frame (black)	Grand Touring/Grand Touring SE '94		18	
518 305 401	Forming Frame (black)	Grand Touring XTC '94		6	
518 311 140	Forming Frame	1996		2	
518 313 245	Forming Frame	Grand Touring 500 '96		10	
<b>FRAME</b>					
580 537 500	Frame (welded)	Tundra LT '91-'92	See price list	2	
580 601 600	Frame (welded)	Tundra '93		1	
580 616 902	Frame (welded)	Tundra II '94		1	
580 631 600	Frame	MX '95		2	
580 631 800	Frame	Formula STX LT II '95		6	
580 632 000	Frame	Grand Touring 470 '95		3	
580 632 900	Frame	Touring E 377 '95		1	
580 633 100	Frame	Formula SL 503 '95		2	
580 633 200	Frame	Formula S 377 '95		1	
580 633 700	Frame	Mach Z '95		7	
580 633 900	Frame	Formula III 599 '95		2	
580 640 300	Frame	Touring SLE 503 '95		1	
M519267	Frame	Skandic WT '95		6	
<b>BOTTOM PAN</b>					
414 684 500	Bottom Pan (red)	Formula Plus '90-'91; Formula Plus XTC/ Formula Plus E '91	See price list	15	
414 699 300	Bottom Pan	Scout '90-'92		5	
414 713 600	Bottom Pan	Safari LC '90; Safari GLX '90-'92; Safari LCE '91-'92		7	
414 746 000	Bottom Pan (black)	Formula Mach 1 '91		16	
414 760 700	Bottom Pan (black)	Formula Mach 1 '92		1	
414 781 700	Bottom Pan (black)	Formula MX XTC '92-'93		44	
414 846 500	Bottom Pan	Safari Rally E '94		30	
M528657	Bottom Pan (black)	Mountain Special '95		1	
M529016	Bottom Pan (black)	Skandic WT '95		9	

Dealer no. \_\_\_\_\_ Dealer name \_\_\_\_\_

<b>HOOD</b>					
571 008 002	Hood (pearl blue)	Grand Touring '94	See price list	24	
571 008 402	Hood (lower)	Skandic II 503 '94		3	
572 023 100	Hood	Alpine II '90-'91		6	
572 023 300	Hood (lower) (blue)	Safari LX/Safari LXE '91		8	
572 023 400	Hood (black)	Élan'91-'93		4	
572 025 900	Hood (lower)	Skandic II 377 '92-'93		8	
572 026 200	Hood (lower)	Safari LE '92		3	
572 043 602	Hood	1993		10	
572 046 002	Hood (black)	Mach Z '94		6	
572 046 102	Hood (red)	Formula ST/Formula Z/Formula STX '94		4	
572 046 402	Hood (green)	Summit 470/Summit 583 '94; Summit 670 '95		6	
572 046 702	Hood (lower) (black)	Skandic II 377 '94		62	
572 052 213	Hood (red)	Formula SL '95		27	
572 055 000	Hood (black)	Safari LC '94		3	
572 055 100	Hood (mulberry)	Safari '94		2	
572 056 403	Hood (pearl blue)	Grand Touring 580 '95		3	
580 620 200	Hood Assy	Summit 470 II '94		22	
580 620 500	Hood Assy	Formula ST '94		2	
580 622 400	Hood Assy	MX Z '94		38	
580 622 800	Hood Assy	Formula Z '94		42	
580 626 400	Hood Assy	Mach Z '93	15		
<b>SHOCK</b>					
860 302 700	Shock Kit	Safari Scout '89-'92	See price list	7	
861 741 400	Shock Kit	Grand Touring XTC '94; MX/Formula STX/ Formula Z/Mach Z/Mach 1 '94-'95; Grand Touring 470/Grand Touring 580/ Formula SS 670 '95; Formula III '95-'96		102	
861 742 700	Shock Kit (front) HPG	Formula ST/Mach Z '94; Formula STX '94- '96, MX/Formula SS 670/Grand Touring 470 '95; Grand Touring 580 '95-'96		99	
861 742 800	Shock Kit (front)	MX/Formula STX/Formula Z '94-'95; Grand Touring 470/Grand Touring 580/Formula SS 670 '95; Formula III/Mach Z/Mach 1 '95-'96		139	
861 742 900	Shock Kit (rear)	Summit 470 '94; MX/Formula STX/Summit 583/Formula Z '94-'95; Mach Z '94-'96; Summit 670/Gand Touring 470/Grand Touring 580/Formula SS 670 '95; Formula III/Mach 1 '95-'96		50	

Dealer no. \_\_\_\_\_ Dealer name \_\_\_\_\_



Date: November 25, 1998

No. **99-103**

**TO ALL U.S. DEALERS**

**SUBJECT: Inventory Clearance Sale**

Bombardier, as part of its inventory management policy, is reducing the quantity of certain items by offering them at drastically reduced prices (as shown on the attached listing).

Quantities are limited, so please take advantage right now as we will proceed on a "first come-first served" basis and no back-orders will be retained.

Please note that prices apply only to stock presently in inventory.

**To benefit from this special, please fax your order at our order desk at 1-800-366-3880.**

## INVENTORY CLEARANCE ORDER FORM

P/N	DESCRIPTION	DEALER US	RETAIL US	AVAILABLE STOCK	QTY
<b>ENGINE</b>					
400 407 100	Engine 467	MX/Grand Touring	470 '95	See price list	2
400 407 500	Engine 454	MX Z 440	'96		1
400 506 100	Engine 582	Grand Touring	580 '95		1
400 506 600	Engine 503	Skandic 500	'96		1
<b>DRIVE PULLEY</b>					
417 201 400	Drive Pulley	Formula Mach 1/Formula Mach 1 XTC	'90	See price list	1
417 201 900	Drive Pulley	Safari LC '90; Safari GLX '90-'91; Safari LCE '91			1
417 202 100	Drive Pulley	Formula MX XTC	'91		2
417 202 200	Drive Pulley	Formula Plus/Formula Plus XTC	'91		2
417 203 300	Drive Pulley	Formula Mach 1 XTC	'92		8
417 204 400	Drive Pulley	Formula Plus X	'93		1
417 204 500	Drive Pulley	Formula MX Z	'93		2
417 205 400	Drive Pulley	Safari Rally E	'94		1
417 208 100	Drive Pulley	Grand Touring	580 '95		2
417 208 200	Drive Pulley	Formula STX	'95		3
417 210 800	Drive Pulley	Formula STX	'96		4
417 212 200	Drive Pulley	Formula SL	'96		15
581 099 000	Drive Pulley	Tundra/Tundra LT	'93		1
<b>FRONT MEMBER</b>					
518 187 400	Front Member (black)	Cheyenne	'91	See price list	3
518 199 300	Front Member (black)	Safari LE '92; Safari L/Skandic 377 '92-'94; Safari deluxe '93-'94			6
518 199 500	Front Member (black)	Skandic II 377	'92-'94		8
518 209 200	Front Member (black)	Safari Rally	'93-'94		2
518 209 500	Front Member (black)	Skandic 503	'93-'94		3
518 300 700	Front Member (red)	Formula Plus/Formula Plus E/ Formula Plus XTC	'93		1
518 307 700	Front Member (black)	Grand Touring/Grand Touring XTC	'94		3
518 308 300	Front Member (black)	Grand Touring SE/Mach 1	'94		6
518 313 041	Front Member (welded)	Formula SS/Formula STX/Formula Z/ Formula STX LT/Grand Touring 580	'96		37
518 313 042	Front Member (welded)	Formula SLS/Grand Touring	500 '96		9
518 313 055	Front Member (welded)	1996			9
580 565 700	Front Member (red)	Formula Plus/Formula Plus LT	'90		3

Dealer no. \_\_\_\_\_ Dealer name \_\_\_\_\_

P/N	DESCRIPTION	DEALER US	RETAIL US	AVAILABLE STOCK	QTY
<b>CARBURETOR</b>					
403 106 000	Carburetor VM-34-256	See price list		1	
403 106 900	Carburetor VM-40-24 MAG			2	
403 107 500	Carburetor VM-34-320			3	
403 107 600	Carburetor VM-34-321			3	
403 109 600	Carburetor VM-34-372 PTO			4	
403 110 100	Carburetor VM-34-378			5	
403 110 400	Carburetor VM-34 PTO			3	
403 110 500	Carburetor VM-34			2	
403 111 500	Carburetor VM-30			3	
403 111 800	Carburetor VM-34 MAG			11	
403 111 900	Carburetor VM-40 PTO HAC			4	
403 112 000	Carburetor VM-40 MAG HAC			7	
403 112 800	Carburetor VM-34 PTO			1	
403 112 900	Carburetor VM-34 MAG			2	
403 113 200	Carburetor VM-40 PTO HAC			10	
403 113 900	Carburetor VM-40 MAG			4	
403 114 800	Carburetor VM-34 PTO			5	
403 114 900	Carburetor VM-34 MAG			15	
403 115 000	Carburetor VM-38 MAG			10	
403 115 100	Carburetor VM-38 PTO			3	
403 115 400	Carburetor VM-38 PTO			9	
403 115 500	Carburetor VM-38 MAG			9	
403 116 000	Carburetor VM-40 PTO			24	
403 116 100	Carburetor VM-40 MAG			3	
403 116 500	Carburetor VM-38 MAG			3	
403 116 600	Carburetor VM-34 PTO			27	
403 116 700	Carburetor VM-34 MAG			14	
403 117 800	Carburetor VM-38 HAC			36	
403 118 300	Carburetor VM-34 PTO			20	
403 118 400	Carburetor VM-34 MAG			5	
403 119 000	Carburetor VM-40 PTO			5	
403 119 100	Carburetor VM-40 MAG			1	
403 119 800	Carburetor VM-38 PTO			6	
403 119 900	Carburetor VM-38 MAG			10	
403 120 100	Carburetor VM-34 MAG			27	
403 120 200	Carburetor VM-38 PTO			150	
403 120 300	Carburetor VM-38 MAG			136	
403 120 800	Carburetor VM-40			72	
403 123 800	Carburetor VM-34 PTO			5	
403 124 400	Carburetor VM-40 PTO			11	
403 124 600	Carburetor VM-40 PTO HAC	11			
403 125 300	Carburetor VM-34 MAG	10			
403 125 800	Carburetor VM-38 PTO HAC	9			
403 126 000	Carburetor VM-38 PTO	7			
403 126 700	Carburetor VM-38 PTO	19			
403 126 800	Carburetor VM-38 MAG	41			

Dealer no. \_\_\_\_\_ Dealer name \_\_\_\_\_

P/N	DESCRIPTION	DEALER US	RETAIL US	AVAILABLE STOCK	QTY
<b>FORMING FRAME</b>					
518 182 700	Forming Frame (black)	Formula MX/MX LT '89	See price list	8	
518 183 000	Forming Frame (black)	Scout '91-'92		3	
518 183 100	Forming Frame (black)	Escapade		7	
518 183 300	Forming Frame (black)	Stratos, Saga, Voyageur		13	
518 184 600	Forming Frame (black)	Safari LC '90; Safari LCE '91-'92		16	
518 187 500	Forming Frame	Cheyenne '91		6	
518 187 700	Forming Frame	Safari GLX '91-'92		4	
518 199 600	Forming Frame	Formula MX '92		4	
518 199 700	Forming Frame (red)	Formula Plus/Formula Plus E/ Formula Plus X '92		11	
518 199 800	Forming Frame (red)	Formula Plus XTC '92		7	
518 199 900	Forming Frame (black)	Formula Mach 1 XTC '92		10	
518 300 000	Forming Frame (black)	Formula MX XTC R/ Formula Mach 1 XTC '93		8	
518 301 800	Forming Frame (black)	Grand Touring '93		5	
518 303 200	Forming Frame (red)	Formula Plus EFI '93		9	
518 304 202	Forming Frame (black)	Grand Touring/Grand Touring SE '94		18	
518 305 401	Forming Frame (black)	Grand Touring XTC '94		6	
518 311 140	Forming Frame	1996		2	
518 313 245	Forming Frame	Grand Touring 500 '96		10	
<b>FRAME</b>					
580 537 500	Frame (welded)	Tundra LT '91-'92	See price list	2	
580 601 600	Frame (welded)	Tundra '93		1	
580 616 902	Frame (welded)	Tundra II '94		1	
580 631 600	Frame	MX '95		2	
580 631 800	Frame	Formula STX LT II '95		6	
580 632 000	Frame	Grand Touring 470 '95		3	
580 632 900	Frame	Touring E 377 '95		1	
580 633 100	Frame	Formula SL 503 '95		2	
580 633 200	Frame	Formula S 377 '95		1	
580 633 700	Frame	Mach Z '95		7	
580 633 900	Frame	Formula III 599 '95		2	
580 640 300	Frame	Touring SLE 503 '95		1	
M519267	Frame	Skandic WT '95		6	
<b>BOTTOM PAN</b>					
414 684 500	Bottom Pan (red)	Formula Plus '90-'91; Formula Plus XTC/ Formula Plus E '91	See price list	15	
414 699 300	Bottom Pan	Scout '90-'92		5	
414 713 600	Bottom Pan	Safari LC '90; Safari GLX '90-'92; Safari LCE '91-'92		7	
414 746 000	Bottom Pan (black)	Formula Mach 1 '91		16	
414 760 700	Bottom Pan (black)	Formula Mach 1 '92		1	
414 781 700	Bottom Pan (black)	Formula MX XTC '92-'93		44	
414 846 500	Bottom Pan	Safari Rally E '94		30	
M528657	Bottom Pan (black)	Mountain Special '95		1	
M529016	Bottom Pan (black)	Skandic WT '95		9	

Dealer no. \_\_\_\_\_ Dealer name \_\_\_\_\_



<b>HOOD</b>					
571 008 002	Hood (pearl blue)	Grand Touring '94	See price list	24	
571 008 402	Hood (lower)	Skandic II 503 '94		3	
572 023 100	Hood	Alpine II '90-'91		6	
572 023 300	Hood (lower) (blue)	Safari LX/Safari LXE '91		8	
572 023 400	Hood (black)	Élan'91-'93		4	
572 025 900	Hood (lower)	Skandic II 377 '92-'93		8	
572 026 200	Hood (lower)	Safari LE '92		3	
572 043 602	Hood	1993		10	
572 046 002	Hood (black)	Mach Z '94		6	
572 046 102	Hood (red)	Formula ST/Formula Z/Formula STX '94		4	
572 046 402	Hood (green)	Summit 470/Summit 583 '94; Summit 670 '95		6	
572 046 702	Hood (lower) (black)	Skandic II 377 '94		62	
572 052 213	Hood (red)	Formula SL '95		27	
572 055 000	Hood (black)	Safari LC '94		3	
572 055 100	Hood (mulberry)	Safari '94		2	
572 056 403	Hood (pearl blue)	Grand Touring 580 '95		3	
580 620 200	Hood Assy	Summit 470 II '94		22	
580 620 500	Hood Assy	Formula ST '94		2	
580 622 400	Hood Assy	MX Z '94		38	
580 622 800	Hood Assy	Formula Z '94		42	
580 626 400	Hood Assy	Mach Z '93	15		
<b>SHOCK</b>					
860 302 700	Shock Kit	Safari Scout '89-'92	See price list	7	
861 741 400	Shock Kit	Grand Touring XTC '94; MX/Formula STX/ Formula Z/Mach Z/Mach 1 '94-'95; Grand Touring 470/Grand Touring 580/ Formula SS 670 '95; Formula III '95-'96		102	
861 742 700	Shock Kit (front) HPG	Formula ST/Mach Z '94; Formula STX '94- '96, MX/Formula SS 670/Grand Touring 470 '95; Grand Touring 580 '95-'96		99	
861 742 800	Shock Kit (front)	MX/Formula STX/Formula Z '94-'95; Grand Touring 470/Grand Touring 580/Formula SS 670 '95; Formula III/Mach Z/Mach 1 '95-'96		139	
861 742 900	Shock Kit (rear)	Summit 470 '94; MX/Formula STX/Summit 583/Formula Z '94-'95; Mach Z '94-'96; Summit 670/Gand Touring 470/Grand Touring 580/Formula SS 670 '95; Formula III/Mach 1 '95-'96		50	

Dealer no. \_\_\_\_\_ Dealer name \_\_\_\_\_



Date: December 11, 1998

No. **99A-102**

**TO ALL U.S. DEALERS**

**SUBJECT: Information Update on 1999 Accessories**

The following information is the latest update pertaining to 1999 accessories.

**NO LONGER AVAILABLE**

P/N	DESCRIPTION
513 032 946	Tank Cover (applicable to MX Z 600)
860 703 000	Mirror Kit (applicable to 1999 CK3 Series models)

**AVAILABLE NOW**

P/N	DESCRIPTION
861 771 100	Temperature Gauge Kit (for 1999 ZX Series models)
861 771 400	Mirror Kit* (applicable to 1999 CK3 and ZX Series models)

\* Following photos show new mirrors installed.





**NOTE:** Should you have already ordered mirror kits under (P/N 860 703 000), please reorder under new (P/N 861 771 400).

## CORRECTION

Second ~~Table~~ shows (P/N 517 302 002) as the P/N for 1999 ZX medium-profile windshield; this P/N should be replaced by **(P/N 517 302 022)**.

## PRICE CHANGES

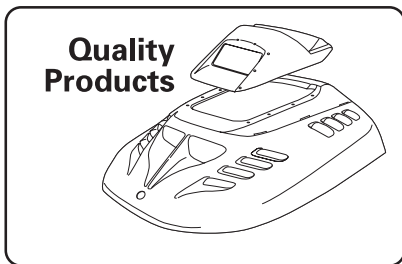
Please note these important price changes, effective immediately, on the following accessories:

P/N	DESCRIPTION	SUGG. RETAIL	DEALER COST
860 501 600	Handle Kit (yellow)	See price list	
860 501 700	Handle Kit (red)		
860 702 800	Hitch Kit		
861 769 300	Convertible Seat Kit		
861 769 600	Hitch Kit		
861 771 400	Mirror Kit		

Please note these important price changes, effective immediately, on the following parts:

P/N	DESCRIPTION	SUGG. RETAIL	DEALER COST
415 056 000	Reflector RH	See price list	
415 056 001	Reflector LH		
516 000 237	Reflector RH		
516 000 238	Reflector LH		

Please advise all involved personnel of these changes.



Date: December 11, 1998

No. **99A-102**

**TO ALL CANADIAN DEALERS**

**SUBJECT: Information Update  
on 1999 Accessories**

The following information is the latest update pertaining to 1999 accessories.

**NO LONGER AVAILABLE**

P/N	DESCRIPTION
513 032 946	Tank Cover (applicable to MX Z 600)
860 703 000	Mirror Kit (applicable to 1999 CK3 Series models)

**AVAILABLE NOW**

P/N	DESCRIPTION
861 771 100	Temperature Gauge Kit (for 1999 ZX Series models)
861 771 400	Mirror Kit* (applicable to 1999 CK3 and ZX Series models)

\* Following photos show new mirrors installed.





**NOTE:** Should you have already ordered mirror kits under (P/N 860 703 000), please reorder under new (P/N 861 771 400).

## CORRECTION

Second ~~Table~~ shows (P/N 517 302 002) as the P/N for 1999 ZX medium-profile windshield; this P/N should be replaced by **(P/N 517 302 022)**.

## PRICE CHANGES

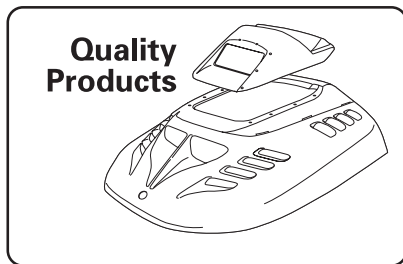
Please note these important price changes, effective immediately, on the following accessories:

P/N	DESCRIPTION	SUGG. RETAIL	DEALER COST
860 501 600	Handle Kit (yellow)	See price list	
860 501 700	Handle Kit (red)		
860 702 800	Hitch Kit		
861 769 300	Convertible Seat Kit		
861 769 600	Hitch Kit		
861 771 400	Mirror Kit		

Please note these important price changes, effective immediately, on the following parts:

P/N	DESCRIPTION	SUGG. RETAIL	DEALER COST
415 056 000	Reflector RH	See price list	
415 056 001	Reflector LH		
516 000 237	Reflector RH		
516 000 238	Reflector LH		

Please advise all involved personnel of these changes.



Date: December 11, 1998

No. **99-104**

**TO ALL CANADIAN DEALERS**

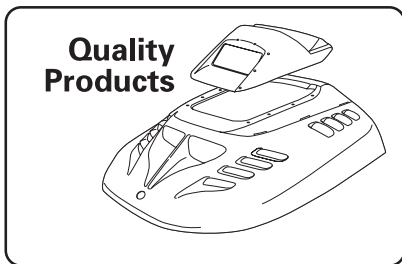
**SUBJECT: 1999 High Altitude Kits**

In order to help you quickly locate high altitude kits for 1999 snowmobile models, here is an updated reference list with applications and pricing.

You can place an order through your respective order desk.

### 1999 HIGH ALTITUDE KITS

PART NUMBER	DESCRIPTION	APPLICATION	CDN DEALER	CDN RETAIL
861 766 600	High Altitude Kit	Mach Z/Mach Z R/Mach Z LT/Mach Z LT R '99	See price list	
861 766 700	High Altitude Kit	Mach 1/Mach 1 R '99		
861 766 800	High Altitude Kit	Formula III 800 '99		
861 766 900	High Altitude Kit	Formula III 700 '99		
861 767 000	High Altitude Kit	Formula III 600 '99		
861 767 100	High Altitude Kit	Formula Z 670/Formule Deluxe 670 '99		
861 767 200	High Altitude Kit	Formula Z 583/Formule Deluxe 583 '99		
861 767 300	High Altitude Kit	Formula Z 500/Formule Deluxe 500 LC '99		
861 767 400	High Altitude Kit	Formula Deluxe 500/Formule SL '99		
861 767 500	High Altitude Kit	Formula Deluxe 380/Formule S '99		
861 767 600	High Altitude Kit	MX Z 670 '99		
861 767 700	High Altitude Kit	MX Z 600 '99		
861 767 800	High Altitude Kit	MX Z 500 '99		
861 767 900	High Altitude Kit	MX Z 440 '99		
861 768 000	High Altitude Kit	Grand Touring SE '99		
861 768 100	High Altitude Kit	Grand Touring 700 '99		
861 768 200	High Altitude Kit	Grand Touring 583 '99		
861 768 300	High Altitude Kit	Grand Touring 500 '99		
861 768 400	High Altitude Kit	Touring SLE/Skandic 500 '99		
861 768 500	High Altitude Kit	Touring LE '99		
861 768 600	High Altitude Kit	Touring E/Skandic 380 '99		
861 768 900	High Altitude Kit	Tundra R/Tundra '99		
861 769 000	High Altitude Kit	Skandic WT LC '99		
861 769 100	High Altitude Kit	Skandic WT '99		
861 769 200	High Altitude Kit	Skandic SWT '99		
861 770 800	Sea Level Kit	Summit X 670 '99		
861 770 900	Sea Level Kit	Summit 600/Summit 500 '99		



Date: December 11, 1998

No. **99-104**

**TO ALL U.S. DEALERS**

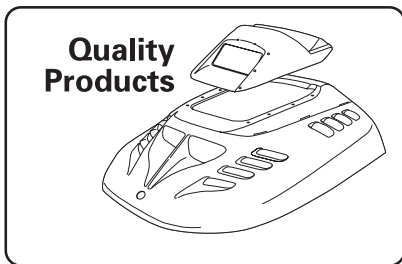
**SUBJECT: 1999 High Altitude Kits**

In order to help you quickly locate high altitude kits for 1999 snowmobile models, here is an updated reference list with applications and pricing.

You can place an order through your respective order desk.

### 1999 HIGH ALTITUDE KITS

PART NUMBER	DESCRIPTION	APPLICATION	USA DEALER	USA RETAIL
861 766 600	High Altitude Kit	Mach Z/Mach Z R/Mach Z LT/Mach Z LT R '99	See price list	
861 766 700	High Altitude Kit	Mach 1/Mach 1 R '99		
861 766 800	High Altitude Kit	Formula III 800 '99		
861 766 900	High Altitude Kit	Formula III 700 '99		
861 767 000	High Altitude Kit	Formula III 600 '99		
861 767 100	High Altitude Kit	Formula Z 670/Formula Deluxe 670 '99		
861 767 200	High Altitude Kit	Formula Z 583/Formula Deluxe 583 '99		
861 767 300	High Altitude Kit	Formula Z 500/Formula Deluxe 500 LC '99		
861 767 400	High Altitude Kit	Formula Deluxe 500/Formula SL '99		
861 767 500	High Altitude Kit	Formula Deluxe 380/Formula S '99		
861 767 600	High Altitude Kit	MX Z 670 '99		
861 767 700	High Altitude Kit	MX Z 600 '99		
861 767 800	High Altitude Kit	MX Z 500 '99		
861 767 900	High Altitude Kit	MX Z 440 '99		
861 768 000	High Altitude Kit	Grand Touring SE '99		
861 768 100	High Altitude Kit	Grand Touring 700 '99		
861 768 200	High Altitude Kit	Grand Touring 583 '99		
861 768 300	High Altitude Kit	Grand Touring 500 '99		
861 768 400	High Altitude Kit	Touring SLE/Skandic 500 '99		
861 768 500	High Altitude Kit	Touring LE '99		
861 768 600	High Altitude Kit	Touring E/Skandic 380 '99		
861 768 900	High Altitude Kit	Tundra R/Tundra '99		
861 769 000	High Altitude Kit	Skandic WT LC '99		
861 769 100	High Altitude Kit	Skandic WT '99		
861 769 200	High Altitude Kit	Skandic SWT '99		
861 770 800	Sea Altitude Kit	Summit X 670 '99		
861 770 900	Sea Altitude Kit	Summit 600/Summit 500 '99		



Date: December 11, 1998

No. **99-104**

**TO ALL CANADIAN DISTRIBUTORS**

**SUBJECT: 1999 High Altitude Kits**

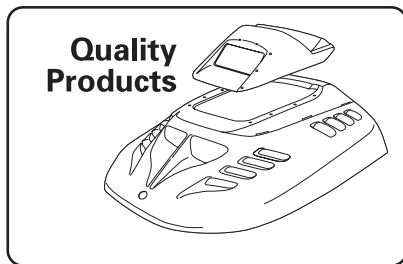
In order to help you quickly locate high altitude kits for 1999 snowmobile models, here is an updated reference list with applications and pricing.

You can place an order through your respective order desk.

**1999 HIGH ALTITUDE KITS**

PART NUMBER	DESCRIPTION	APPLICATION	CANADIAN DISTRIBUTOR
861 766 600	High Altitude Kit	Mach Z/Mach Z R/Mach Z LT/Mach Z LT R '99	See price list
861 766 700	High Altitude Kit	Mach 1/Mach 1 R '99	
861 766 800	High Altitude Kit	Formula III 800 '99	
861 766 900	High Altitude Kit	Formula III 700 '99	
861 767 000	High Altitude Kit	Formula III 600 '99	
861 767 100	High Altitude Kit	Formula Z 670/Formular Deluxe 670 '99	
861 767 200	High Altitude Kit	Formula Z 583/Formular Deluxe 583 '99	
861 767 300	High Altitude Kit	Formula Z 500/Formular Deluxe 500 LC '99	
861 767 400	High Altitude Kit	Formula Deluxe 500/Formular SL '99	
861 767 500	High Altitude Kit	Formula Deluxe 380/Formular S '99	
861 767 600	High Altitude Kit	MX Z 670 '99	
861 767 700	High Altitude Kit	MX Z 600 '99	
861 767 800	High Altitude Kit	MX Z 500 '99	
861 767 900	High Altitude Kit	MX Z 440 '99	
861 768 000	High Altitude Kit	Grand Touring SE '99	
861 768 100	High Altitude Kit	Grand Touring 700 '99	
861 768 200	High Altitude Kit	Grand Touring 583 '99	
861 768 300	High Altitude Kit	Grand Touring 500 '99	
861 768 400	High Altitude Kit	Touring SLE/Skandic 500 '99	
861 768 500	High Altitude Kit	Touring LE '99	
861 768 600	High Altitude Kit	Touring E/Skandic 380 '99	
861 768 900	High Altitude Kit	Tundra R/Tundra '99	
861 769 000	High Altitude Kit	Skandic WT LC '99	
861 769 100	High Altitude Kit	Skandic WT '99	
861 769 200	High Altitude Kit	Skandic SWT '99	
861 770 800	Sea Altitude Kit	Summit X 670 '99	
861 770 900	Sea Altitude Kit	Summit 600/Summit 500 '99	





Date: December 11, 1998

No. **99-104**

**TO ALL INTERNATIONAL DISTRIBUTORS**

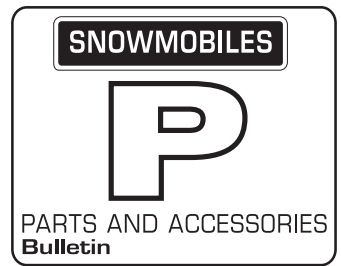
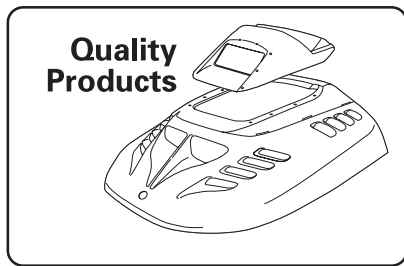
**SUBJECT: 1999 High Altitude Kits**

In order to help you quickly locate high altitude kits for 1999 snowmobile models, here is an updated reference list with applications and pricing.

You can place an order through your respective order desk.

### 1999 HIGH ALTITUDE KITS

PART NUMBER	DESCRIPTION	APPLICATION	INTERNATIONAL DISTRIBUTOR
861 766 600	High Altitude Kit	Mach Z/Mach Z R/Mach Z LT/Mach Z LT R '99	See price list
861 766 700	High Altitude Kit	Mach 1/Mach 1 R '99	
861 766 800	High Altitude Kit	Formula III 800 '99	
861 766 900	High Altitude Kit	Formula III 700 '99	
861 767 000	High Altitude Kit	Formula III 600 '99	
861 767 100	High Altitude Kit	Formula Z 670/Formula Deluxe 670 '99	
861 767 200	High Altitude Kit	Formula Z 583/Formula Deluxe 583 '99	
861 767 300	High Altitude Kit	Formula Z 500/Formula Deluxe 500 LC '99	
861 767 400	High Altitude Kit	Formula Deluxe 500/Formula SL '99	
861 767 500	High Altitude Kit	Formula Deluxe 380/Formula S '99	
861 767 600	High Altitude Kit	MX Z 670 '99	
861 767 700	High Altitude Kit	MX Z 600 '99	
861 767 800	High Altitude Kit	MX Z 500 '99	
861 767 900	High Altitude Kit	MX Z 440 '99	
861 768 000	High Altitude Kit	Grand Touring SE '99	
861 768 100	High Altitude Kit	Grand Touring 700 '99	
861 768 200	High Altitude Kit	Grand Touring 583 '99	
861 768 300	High Altitude Kit	Grand Touring 500 '99	
861 768 400	High Altitude Kit	Touring SLE/Skandic 500 '99	
861 768 500	High Altitude Kit	Touring LE '99	
861 768 600	High Altitude Kit	Touring E/Skandic 380 '99	
861 768 900	High Altitude Kit	Tundra R/Tundra '99	
861 769 000	High Altitude Kit	Skandic WT LC '99	
861 769 100	High Altitude Kit	Skandic WT '99	
861 769 200	High Altitude Kit	Skandic SWT '99	
861 770 800	Sea Altitude Kit	Summit X 670 '99	
861 770 900	Sea Altitude Kit	Summit 600/Summit 500 '99	



No. **99-105**

Date: December 11, 1998

**SUBJECT: New Drive Belt Chart**

<p><b>TO ALL SNOWMOBILE DEALERS AND DISTRIBUTORS</b></p>
<p><b>ATTENTION: PARTS AND SERVICE MANAGERS</b></p>

In order to help you quickly locate our drive belts, a new drive belt chart has been created.

This updated drive belt chart, (P/N 480 839 900), contains all drive belts with their applications from 1996 through 1999.

It will automatically be shipped to your dealership by mid-December.



Date: December 11, 1998

No. **99A-102**

**TO ALL INTERNATIONAL DISTRIBUTORS**

**SUBJECT: Information Update  
on 1999 Accessories**

The following information is the latest update per-  
taining to 1999 accessories.

**NO LONGER AVAILABLE**

P/N	DESCRIPTION
513 032 946	Tank Cover (applicable to MX Z 600)
860 703 000	Mirror Kit (applicable to 1999 CK3 Series models)

**AVAILABLE NOW**

P/N	DESCRIPTION
861 771 100	Temperature Gauge Kit (for 1999 ZX Series models)
861 771 400	Mirror Kit* (applicable to 1999 CK3 and ZX Series models)

\* Following photos show new mirrors installed.





**NOTE:** Should you have already ordered mirror kits under (P/N 860 703 000), please reorder under new (P/N 861 771 400).

**CORRECTION**

Second / ~~Price~~ shows (P/N 517 302 002) as the P/N for 1999 ZX medium-profile windshield; this P/N should be replaced by **(P/N 517 302 022)**.

**PRICE CHANGES**

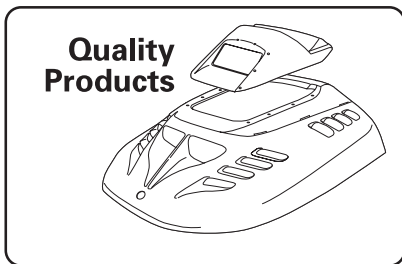
Please note these important price changes, effective immediately, on the following accessories:

P/N	DESCRIPTION	DIST. COST
860 501 600	Handle Kit (yellow)	See price list
860 501 700	Handle Kit (red)	
860 702 800	Hitch Kit	
861 769 300	Convertible Seat Kit	
861 769 600	Hitch Kit	
861 771 400	Mirror Kit	

Please note these important price changes, effective immediately, on the following parts:

P/N	DESCRIPTION	DIST. COST
415 056 000	Reflector RH	See price list
415 056 001	Reflector LH	
516 000 237	Reflector RH	
516 000 238	Reflector LH	

Please advise all involved personnel of these changes.



Date: December 11, 1998

No. **99A-102**

**TO ALL CANADIAN DISTRIBUTORS**

**SUBJECT: Information Update on 1999 Accessories**

The following information is the latest update pertaining to 1999 accessories.

**NO LONGER AVAILABLE**

P/N	DESCRIPTION
513 032 946	Tank Cover (applicable to MX Z 600)
860 703 000	Mirror Kit (applicable to 1999 CK3 Series models)

**AVAILABLE NOW**

P/N	DESCRIPTION
861 771 100	Temperature Gauge Kit (for 1999 ZX Series models)
861 771 400	Mirror Kit* (applicable to 1999 CK3 and ZX Series models)

\* Following photos show new mirrors installed.





**NOTE:** Should you have already ordered mirror kits under (P/N 860 703 000), please reorder under new (P/N 861 771 400).

**CORRECTION**

Second / ~~Price~~ shows (P/N 517 302 002) as the P/N for 1999 ZX medium-profile windshield; this P/N should be replaced by **(P/N 517 302 022)**.

**PRICE CHANGES**

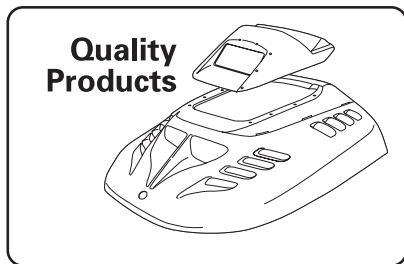
Please note these important price changes, effective immediately, on the following accessories:

P/N	DESCRIPTION	DEALER COST
860 501 600	Handle Kit (yellow)	See price list
860 501 700	Handle Kit (red)	
860 702 800	Hitch Kit	
861 769 300	Convertible Seat Kit	
861 769 600	Hitch Kit	
861 771 400	Mirror Kit	

Please note these important price changes, effective immediately, on the following parts:

P/N	DESCRIPTION	DEALER COST
415 056 000	Reflector RH	See price list
415 056 001	Reflector LH	
516 000 237	Reflector RH	
516 000 238	Reflector LH	

Please advise all involved personnel of these changes.



No. **99-106**

Date: February 12, 1999

**SUBJECT: MX Z 700 1999 Parts Catalog Update**

<p><b>TO ALL SKI-DOO SNOWMOBILE DEALERS AND DISTRIBUTORS</b></p>
<p><b>ATTENTION: PARTS AND SERVICE MANAGERS</b></p>

Please find attached corrected sheets to update the *1999 Parts Catalog* (P/N 484 400 015).

These sheets could simply be inserted at their proper place in the catalog.

# PARTS CATALOG

The illustrations figuring in this parts catalog show typical construction of the different assemblies and, in all cases, may not reproduce the full detail or exact shape of the parts shown. However, they represent parts which have the same or similar function.

## SYMBOLS USED IN THIS CATALOG

- @ - In «Quantity» column means «Use as Required».
- Opt - In «Quantity» column means «Optional».
- N** - In «Numerical» column means «New Parts».
- A **bold** description indicates that several parts are included in this item.
- XXX — - Parts marked with «XXX» are not available as spare parts.

Ski-Doo Model  
Modèle Ski-Doo

**MX Z 700**

Vehicle Codification  
Code du véhicule  
Can/U.S./Europe

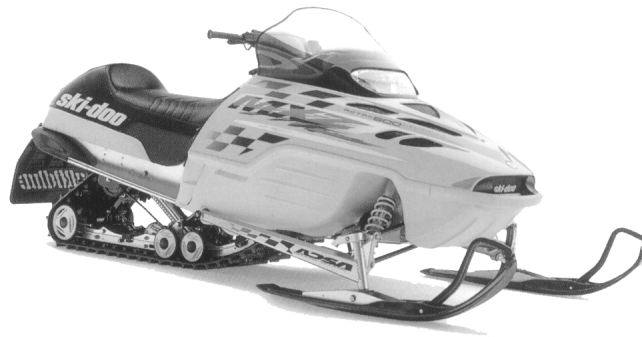
**N/A / 1340 / N/A**

Rotax Engine Type  
Type de moteur Rotax

**«693» (400 604 000)**

Mikuni Carburetor(s)  
Carburateur(s) Mikuni  
PTO/MAG

**403 138 613 (2)** ←



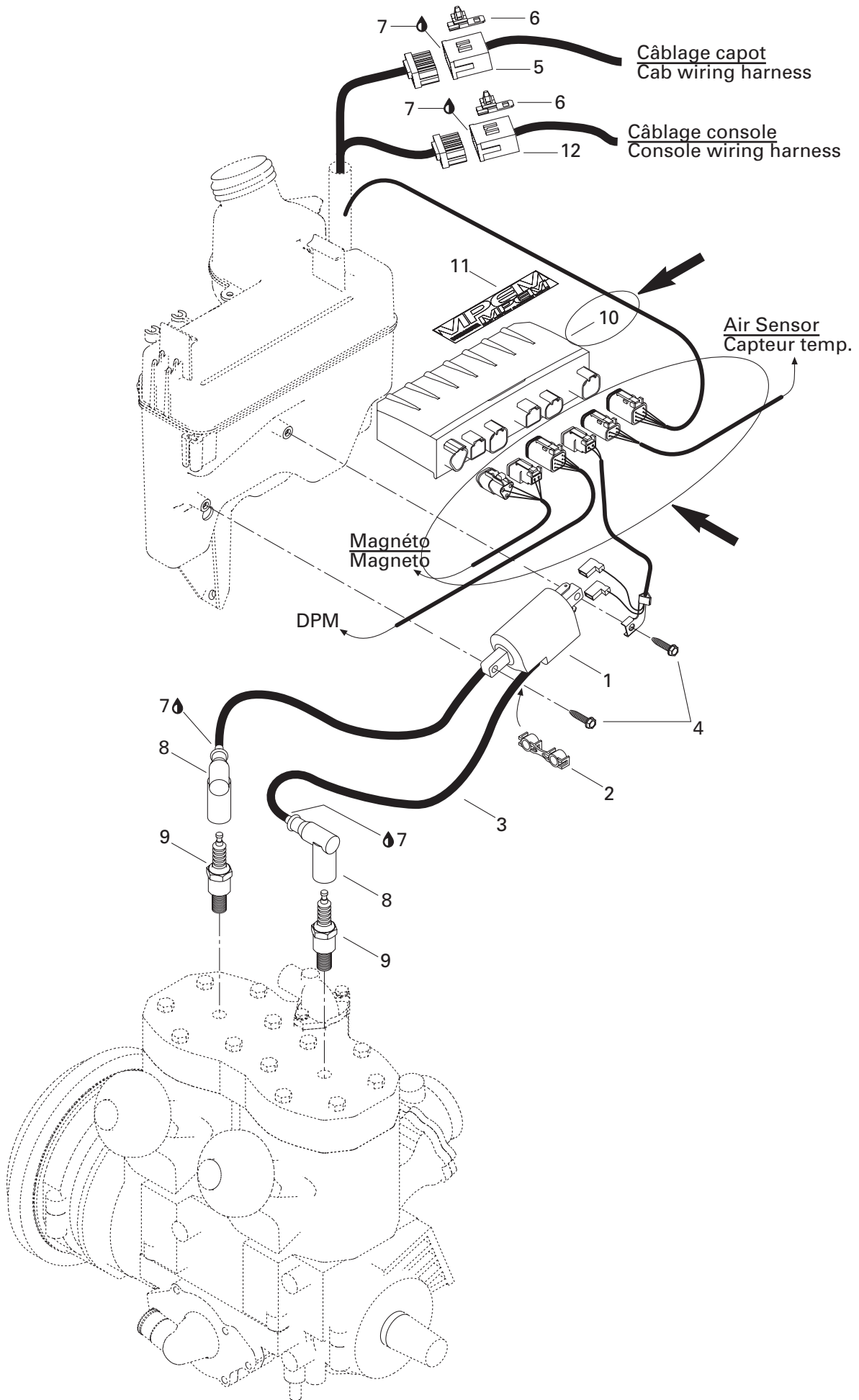
## CATALOGUE DE PIÈCES

Les illustrations contenues dans ce catalogue indiquent la disposition des pièces les unes par rapport aux autres. Il est donc possible qu'elles ne rendent pas compte de la forme exacte de ces pièces ainsi que de leurs détails de fabrication. Ces illustrations ont pour but d'identifier des pièces qui remplissent la même fonction ou une fonction identique.

## SYMBOLS UTILISÉS DANS CE CATALOGUE

- @ - Dans la colonne «Quantité» signifie «Au besoin».
- Opt - Dans la colonne «Quantité» signifie «En option».
- N** - Dans la colonne «Numérique» signifie «Nouvelle pièce».
- Une description en caractère **gras** signifie qu'il y a plus d'une pièce dans cet item.
- XXX — - Les articles marqués d'un «XXX» ne sont pas disponibles comme pièces de remplacement.



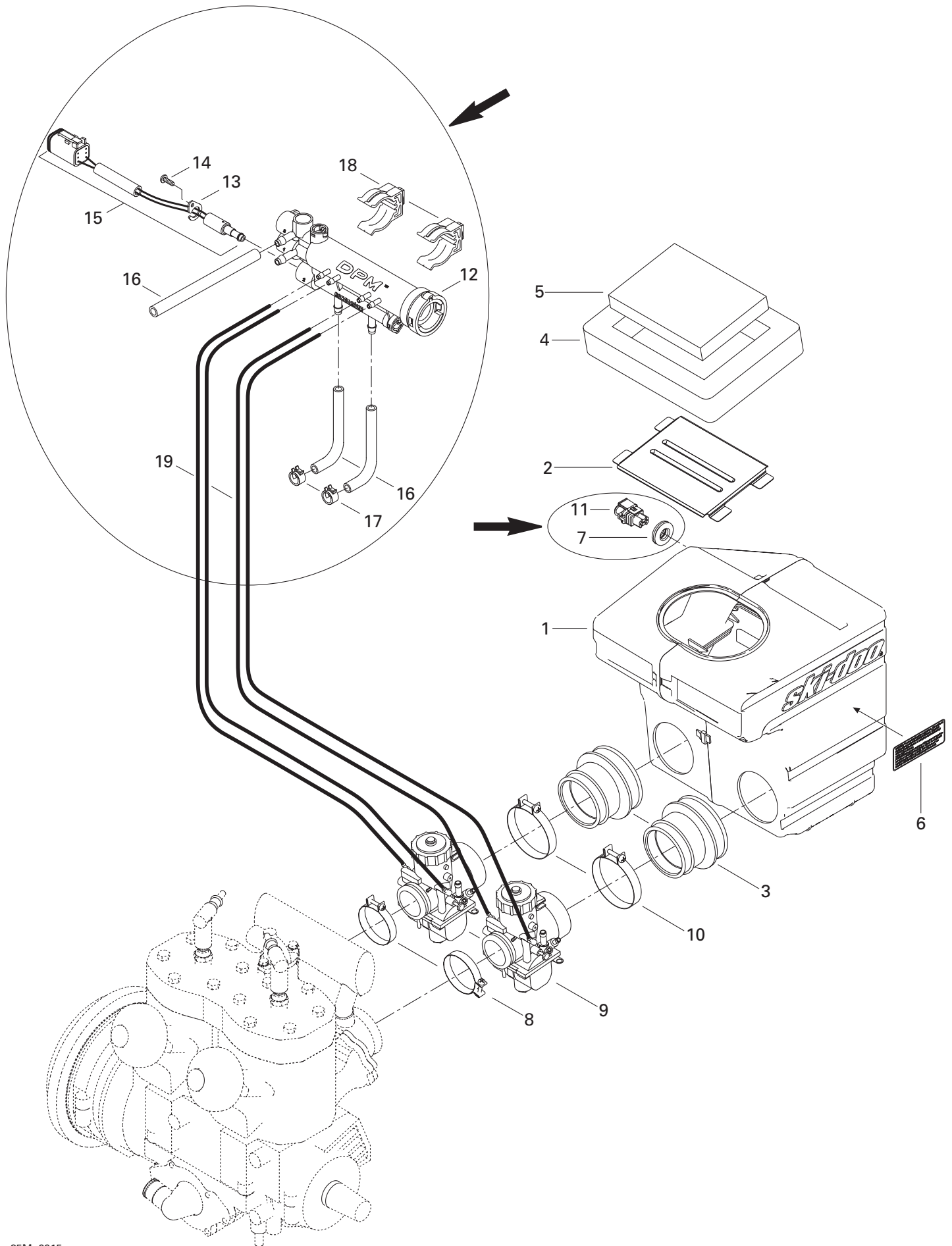




## Ignition System Système d'allumage

**MX Z 700**

<b>N 1→3</b>	512 059 039	Ignition Coil .....	Bobine d'allumage .....	1
<b>2</b>	410 914 600	Plastic Clip .....	Attache de fil de bougie .....	1
<b>3</b>	278 001 268	Spark Plug Wire .....	Fil de bougie .....	@
<b>N 4</b>	250 000 005	Tapping Screw .....	Vis autotaraudeuse .....	2
<b>N 5</b>	515 175 352	Male Housing .....	Logement mâle .....	1
<b>N 6</b>	515 175 283	Housing Support .....	Support de logement .....	2
<b>7</b>	293 550 004	Dielectric Grease, 150 g .....	Graisse diélectrique, 150 g .....	@
<b>8</b>	278 000 237	Spark Plug Protector .....	Capuchon de bougie .....	2
<b>9</b>	414 961 100	Spark Plug (NGK BR9ES) .....	Bougie (NGK BR9ES) .....	2
<b>➔ N 10</b>	<b>515 175 487</b>	Calibration Module .....	Module de calibration .....	1
<b>N 11</b>	516 000 245	Electrical Box Decal .....	Décalque boîte électrique .....	1
<b>N 12</b>	515 175 351	Male Housing (15) .....	Logement mâle (15) .....	1



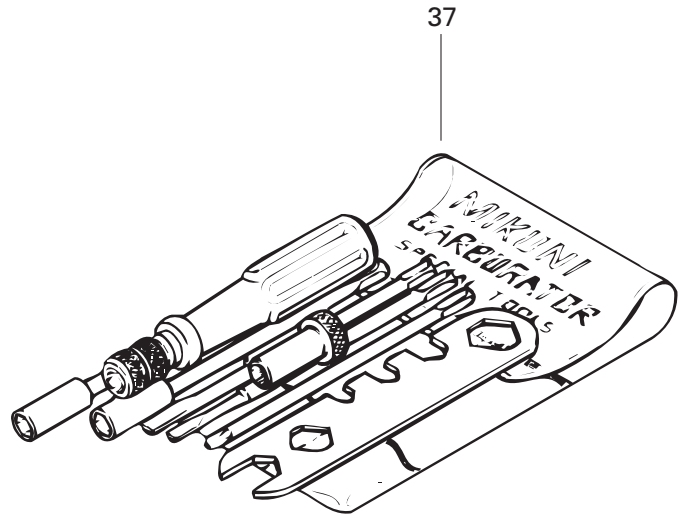
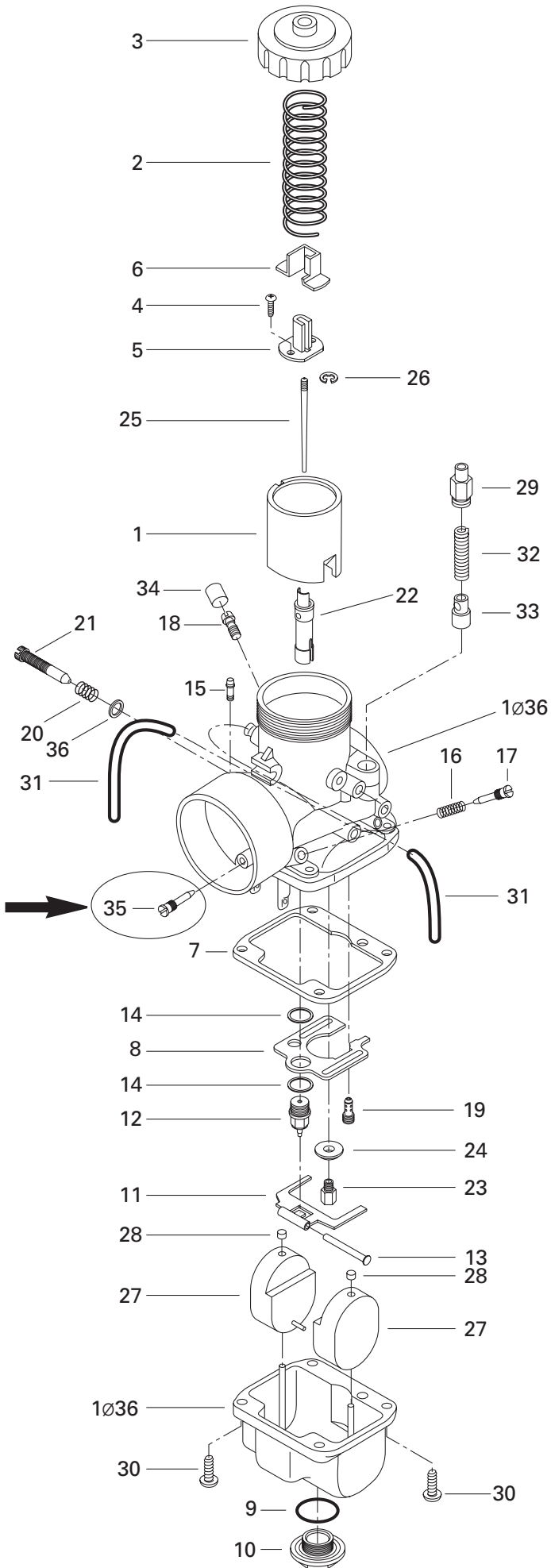


# Air Intake System

## Système d'admission d'air

**MX Z 700**

➔ N 1-7	508 000 059	<b>Air Intake Ass'y</b> .....	<b>Silencieux d'admission ass.</b> .....	1
N 2	508 000 004	Intake Grill .....	Grille d'admission .....	1
N 3	570 068 900	Air Intake Adaptor (40 mm) .....	Adapteur d'admission d'air (40 mm) ...	2
N 4	415 103 100	Lower Foam .....	Mousse extérieure .....	1
N 5	415 103 200	Air Filter .....	Filtre à air .....	1
N 6	516 000 130	Caution Label .....	Étiquette d'attention .....	1
➔ N 7	570 065 500	Grommet .....	Anneau .....	1
N 8	512 059 006	Clamp .....	Bride .....	2
➔ N 9	403 138 613	VM 40 Carburetor .....	Carburateur VM 40 .....	2
N 10	508 000 009	Clamp .....	Bride .....	2
11	270 600 000	Air Sensor .....	Capteur de température .....	1
N 12-15	512 059 026	<b>Pressure Manifold Ass'y</b> .....	<b>Collecteur de pression ass.</b> .....	1
13	415 061 600	Solenoid Lock .....	Barrure électrique .....	1
14	211 000 028	Screw K40 x 10 .....	Vis K40 x 10 .....	1
➔ N 15	515 175 271	Pressure Manifold Harness .....	Câblage de collecteur de pression .....	1
16	415 080 200	Line .....	Conduit .....	@
17	414 554 800	Spring Clamp .....	Bride à ressort .....	2
N 18	512 058 919	Support .....	Support .....	2
19	404 161 814	Hose .....	Durite .....	4

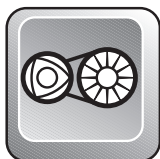




# Carburetors Carburateurs

**MX Z 700**

➔ N 1-36	403 138 613	<b>VM 40 Carburetor</b> .....	<b>Carburateur VM 40</b> .....	2
1	404 132 300	Piston Valve CA 2.5 .....	Tiroir d'accélérateur CA 2.5 .....	2
2	404 156 500	Spring .....	Ressort .....	2
3	404 126 800	Cover .....	Couvercle .....	2
4	404 121 300	Screw with Washer .....	Vis avec rondelle .....	4
5	404 160 800	Connector .....	Connecteur .....	2
6	404 128 100	Cover .....	Couvercle .....	2
7	404 104 700	Gasket .....	Joint.....	2
8	404 112 700	Baffle.....	Chicane .....	2
9	404 112 800	Washer .....	Rondelle.....	2
10	404 112 900	Drain Plug Screw .....	Bouchon d'accès .....	2
N 11	404 161 823	Float Lever .....	Levier du flotteur .....	2
12	404 147 400	Needle Valve 1.5.....	Pointeau 1.5.....	2
13	404 103 300	Lever Pin .....	Goupille de levier .....	2
14	404 101 600	Seat Washer .....	Rondelle siège .....	4
15	404 158 900	Filter .....	Filtre .....	2
16	404 139 800	Spring (Air Screw) .....	Ressort (vis du mélange de ralenti) ....	2
17	404 149 000	Air Screw .....	Vis du mélange de ralenti .....	2
18	404 153 400	Nipple .....	Raccord .....	2
19	404 109 100	Pilot Jet PJ 40 .....	Gicleur du ralenti PJ 40 .....	2
20	404 101 700	Spring (Adjustment Screw) .....	Ressort (vis d'ajustement).....	2
➔ 21	404 151 900	Adjustment Screw .....	Vis d'ajustement .....	2
22	404 127 800	Needle Jet 224-Z-5 .....	Gicleur d'aiguille 224-Z-5 .....	2
➔ 23	404 107 800	Main Jet MJ 310 .....	Gicleur principal MJ 310.....	2
24	404 116 700	Washer .....	Rondelle.....	2
N 25	404 161 840	Needle J8-7DHY06 .....	Aiguille J8-7DHY06.....	2
26	404 152 200	E-Ring .....	Rondelle-E .....	2
27	404 105 400	Float .....	Flotte .....	4
28	404 105 800	Cap .....	Capuchon .....	4
29	404 161 100	Guide Holder .....	Guide .....	2
30	404 102 000	Screw with Lock Washer .....	Vis et rondelle-frein .....	8
➔ 31	404 161 814	Hose .....	Durite.....	4
N 32	404 161 844	Spring .....	Ressort .....	2
N 33	404 161 845	Plunger Ass'y .....	Plongeur ass. ....	2
34	404 154 900	Cap .....	Bouchon .....	2
➔ 35	404 131 700	Plug Screw .....	Vis bouchon .....	2
36	270 500 018	Washer .....	Rondelle.....	2
37	404 112 000	<b>Tool Kit</b> .....	<b>Ens. d'outils</b> .....	1



# Driven Pulley Poulie menée

**MX Z 700**

1	293 800 015	Loctite 242, 10 ml .....	Loctite 242, 10 ml .....	@
2	232 061 414	Nut M6 .....	Écrou M6 .....	3
3	504 141 800	Washer .....	Rondelle .....	1
4→9	504 144 000	<b>Sliding Flange Ass'y</b> .....	<b>Flasque coulissante ass.</b> .....	1
5	504 142 100	Ring .....	Cerceau .....	1
6	732 601 067	Hex. Screw M5 x 11 .....	Vis hex. M5 x 11 .....	6
7	414 918 000	Cam Slider Shoe .....	Glissière de came .....	3
8	415 011 200	Bushing .....	Douille .....	1
9	414 876 600	Bushing Garlock .....	Coussinet Garlock .....	1
10→12	417 010 400	<b>Fixed Flange Ass'y</b> .....	<b>Flasque fixe ass.</b> .....	1
10	417 010 200	Fixed Flange .....	Flasque fixe .....	1
11	504 142 000	Cup .....	Coupole .....	1
12	732 601 067	Hex. Screw M5 x 11 .....	Vis hex. M5 x 11 .....	6
13	414 820 800	Key .....	Clavette .....	1
14	371 903 100	Circlip .....	Circlip .....	1
15	414 558 900	Release Spring (Beige) .....	Ressort de rappel (beige) .....	1
16	504 141 900	Thrust Washer .....	Rondelle d'appui .....	1
17	507 021 300	Key .....	Clavette .....	1
18	224 081 171	Washer 8 mm .....	Rondelle 8 mm .....	1
19	413 701 000	Loctite 767, Antiseize Lube, 12 oz. ....	Loctite 767, lubrifiant antigrippage, 12 oz. ...	@
20	414 784 800	Cork .....	Bouchon de liège .....	1
21	232 581 414	Elastic Stop Nut M8 .....	Écrou d'arrêt élastique M8 .....	3
22	205 482 546	Socket Head Screw M8 x 25 .....	Vis à tête creuse 6 pans M8 x 25 .....	3
23	405 408 200	Ball Bearing .....	Roulement à billes .....	1
N 24	080 044 200	Casting Spacer .....	Entretoise moulée .....	1
25	501 025 000	Flange .....	Flasque .....	1
26	517 293 300	Washer .....	Rondelle .....	1
27	503 183 100	Washer .....	Rondelle .....	1
28	222 087 565	Hex. Screw M8 x 75 .....	Vis hex. M8 x 75 .....	1
29	501 026 300	Countershaft .....	Arbre de renvoi .....	1
30	507 031 300	Brake Disk .....	Disque de frein .....	1
31	504 149 100	Spacer .....	Entretoise .....	2
32	206 263 044	Socket Set Screw M6 x 30 .....	Vis de pression M6 x 30 .....	3
➔ N 33	417 126 337	Cam 47° .....	Came 47° .....	1
34	413 703 100	Loctite 609, 10 c.c. ....	Loctite 609, 10 c.c. ....	@
35	420 245 370	Washer .....	Rondelle .....	3

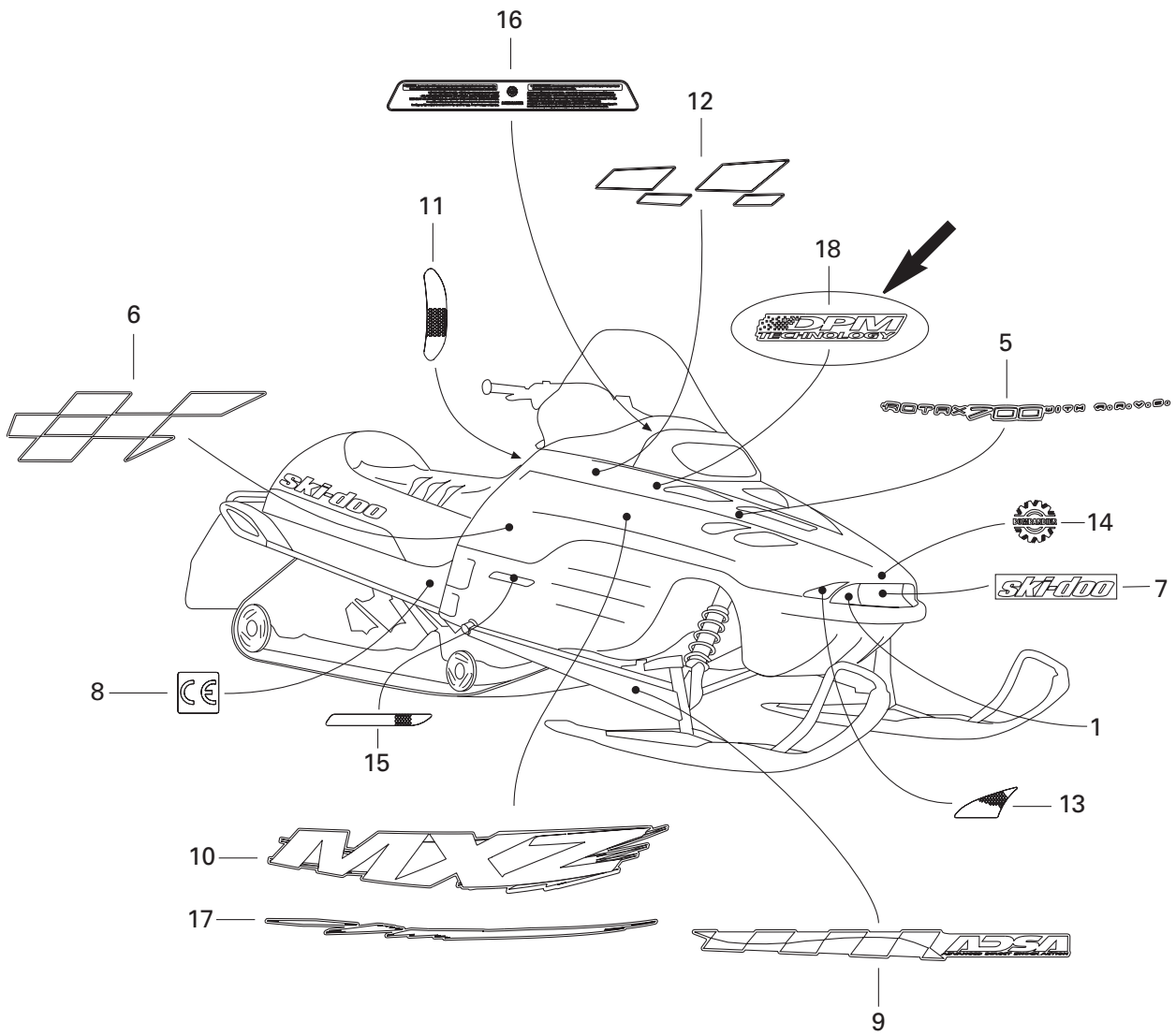
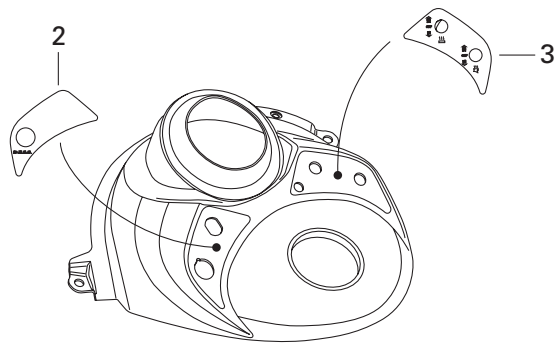


# Cab, Console Capot, console

**MX Z 700**

<b>N 1</b>	572 109 600	Hood (Yellow) .....	Capot (jaune) .....	1
<b>2</b>	570 027 100	Hood Latch .....	Loquet de capot .....	2
<b>3</b>	390 906 800	Pop Rivet 3/16 .....	Rivet pop 3/16 .....	2
<b>4</b>	517 124 300	Washer .....	Rondelle .....	4
<b>N 5</b>	517 302 026	Center Grill (Black) .....	Grille centre (noir) .....	1
<b>N 6</b>	517 302 028	R.H. Intermediate Grill (Black) .....	Grille intermédiaire DR (noir) .....	1
<b>N</b>	517 302 031	L.H. Intermediate Grill (Black) .....	Grille intermédiaire GA (noir) .....	1
<b>N 7</b>	517 302 034	R.H. Side Grill (Black) .....	Grille-côté DR (noir) .....	1
<b>N</b>	517 302 036	L.H. Side Grill (Black) .....	Grille-côté GA (noir) .....	1
<b>8</b>	211 000 028	Flanged Screw K40 x 10 .....	Vis à épaulement K40 x 10 .....	4
<b>N 9</b>	572 098 604	Indicator Support .....	Support d'indicateur .....	1
<b>10</b>	732 601 210	Hex. Tapping Screw .....	Vis hex. autotaraudeuse .....	17
<b>N 11</b>	517 302 183	Clip .....	Pince .....	5
<b>N 12</b>	517 302 237	R.H. Side Foam .....	Mousse latérale DR .....	1
<b>N 13</b>	517 302 238	L.H. Side Foam .....	Mousse latérale GA .....	1
<b>14</b>	234 042 600	Flat Washer .....	Rondelle plate .....	2
<b>15</b>	414 436 900	Snap Cap (Black) .....	Capuchon à pression (noir) .....	2
<b>16</b>	414 436 800	Retainer Cap .....	Capuchon de retenue .....	2
<b>17</b>	391 301 600	Flat Washer .....	Rondelle plate .....	2
<b>N 18</b>	517 302 158	Headlamp Moulding .....	Enjoliveur de phare .....	1
<b>N 19</b>	517 302 003	Windshield Support .....	Support de pare-brise .....	1
<b>➔ N 20</b>	<u>517 302 002</u>	Windshield .....	Pare-brise .....	1
<b>21</b>	570 023 800	Windshield Latch .....	Loquet de pare-brise .....	8
<b>N 22</b>	243 141 640	Hex. Screw M4.8 x 16 .....	Vis hex. M4.8 x 16 .....	4
<b>N 23</b>	517 302 005	R.H. Console .....	Console DR .....	1
<b>N 24</b>	517 302 006	L.H. Console .....	Console GA .....	1
<b>N 25</b>	517 302 007	Center Console .....	Console centre .....	1
<b>26</b>	732 600 030	Screw .....	Vis .....	2
<b>27</b>	390 406 500	Pop Rivet 3/16 .....	Rivet pop 3/16 .....	4
<b>N 28</b>	517 302 023	Air Intake Plate .....	Plaque d'admission d'air .....	1
<b>N 29</b>	517 302 024	R.H. Air Intake Grill .....	Grille d'admission d'air DR .....	1
<b>N 30</b>	517 302 025	L.H. Air Intake Grill .....	Grille d'admission d'air GA .....	1
<b>N 31</b>	517 302 151	Air Intake Foam .....	Mousse-admission d'air .....	2
<b>N 32</b>	517 302 043	Console Nut .....	Écrou de console .....	1
<b>33</b>	293 250 029	Gasket .....	Joint étanche .....	1
<b>34</b>	390 409 400	Pop Rivet 5/32 .....	Rivet pop 5/32 .....	2
<b>N 35</b>	517 302 286	Rubber Stopper .....	Butée de caoutchouc .....	1
<b>N 36</b>	517 302 129	Rope Guide .....	Guide de corde .....	1
<b>N 37</b>	517 302 317	Center Foam .....	Mousse centrale .....	1







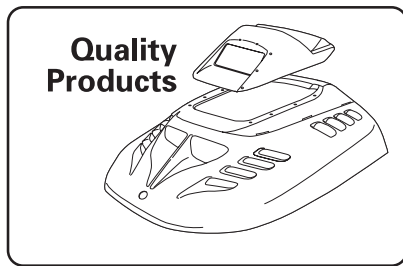
## Decal Décalcomanie

**MX Z 700**

<b>N 1</b>	415 127 659	<b>Bumper Decal Kit</b> .....	<b>Ens. décalque de pare-chocs</b> .....	1
<b>N 2</b>	516 000 226	D.E.S.S. Decal .....	Décalque D.E.S.S. ....	1
<b>N 3</b>	516 000 227	Heat Thumb /Grip Decal .....	Décalque pouce / poignée chauffante ...	1
<b>N 4</b>	415 127 703	<b>Hood Decal Kit</b> (Not Shown).....	<b>Ens. de décalques de capot</b> (non-illus.)	
		(Incl. 3, 5, 7, 10, 11, 13, 16, 17, 18).....	(incl. 3, 5, 7, 10, 11, 13, 16, 17, 18) .....	1
<b>N 5</b>	516 000 031	«ROTAX 700» Decal .....	Décalque «ROTAX 700» .....	2
<b>N 6</b>	415 127 658	<b>Checker Decal Kit</b> .....	<b>Ens. décalque damier</b> .....	1
<b>N 7</b>	516 000 261	«Ski-Doo» Decal .....	Décalque «Ski-Doo» .....	1
<b>8</b>	418 002 200	«CE» Decal .....	Décalque «CE» .....	1
<b>N 9</b>	415 127 655	<b>Arm Decal Kit</b> .....	<b>Ens. de décalques de bras</b> .....	1
<b>N 10</b>	415 127 661	<b>Side Decal Kit</b> .....	<b>Ens. de décalques latéraux</b> .....	1
<b>N 11</b>	516 000 224	Reflector Decal (Yellow).....	Décalques réflecteurs (jaune) .....	2
<b>N 12</b>	415 127 657	<b>Checker Decal Kit</b> .....	<b>Ens. décalque damier</b> .....	1
<b>N 13</b>	415 127 656	<b>Reflector Decal Kit</b> (Yellow) .....	<b>Ens. décalque réflecteur</b> (jaune) ....	1
<b>N 14</b>	516 000 282	BOMBARDIER Logo .....	Logo BOMBARDIER .....	1
<b>15</b>	415 064 400	R.H. Deflector (Yellow) .....	Réflecteur DR (jaune) .....	1
	415 064 401	L.H. Deflector (Yellow) .....	Réflecteur GA (jaune) .....	1
<b>N 16</b>	516 000 301	Warning Label .....	Étiquette d'avertissement .....	1
<b>N 17</b>	415 127 662	<b>Lower Side Decal Kit</b> .....	<b>Ens. inf. de décalques latéraux</b> ....	1
<b>N 18</b>	516 000 243	DPM Decal .....	Décalque DPM .....	2

All labels must be ordered and installed when replacing cab.

Tous les autocollants doivent être commandés et installés lorsqu'un capot est remplacé.



Date: March 19, 1999

No. **99-107**

**TO ALL U.S. DEALERS**

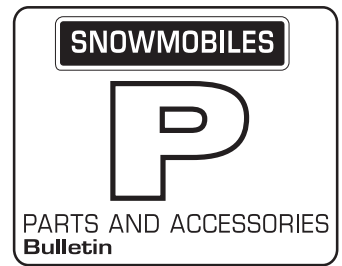
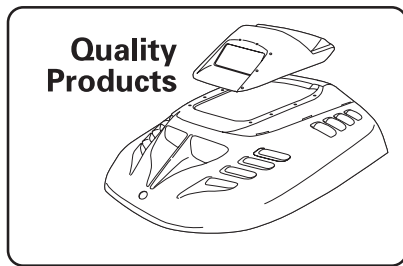
**SUBJECT: Drive Belt Price Revision**

Due to the price competitiveness of this item, Bombardier has decided to review and change the price of the following drive belt prior to its normal price list revision issued in May of each year.

From February 10<sup>th</sup>, 1999, new prices are:

P/N	DESCRIPTION	SUGG. RETAIL	DEALER COST
417 300 066	Drive Belt	\$ 59.95	<b>\$ 38.97</b>

Bombardier pricing policy, along with other manufacturers and suppliers, states that prices are subject to change without notice. Exceptionally, for each belt purchased before February 10<sup>th</sup>, 1999, dealers will be **automatically** credited \$ 25.37 on their parts account.



Date: March 19, 1999

No. **99-107**

**TO ALL CANADIAN DEALERS**

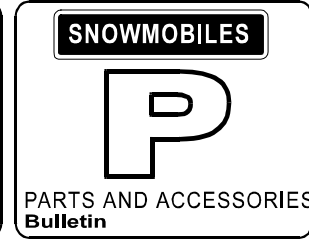
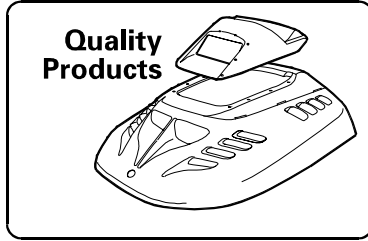
**SUBJECT: Drive Belt Price Revision**

Due to the price competitiveness of this item, Bombardier has decided to review and change the price of the following drive belt prior to its normal price list revision issued in May of each year.

From February 10<sup>th</sup>, 1999, new prices are:

P/N	DESCRIPTION	SUGG. RETAIL	DEALER COST
417 300 066	Drive Belt	\$ 90.68	<b>\$ 58.94</b>

Bombardier pricing policy, along with other manufacturers and suppliers, states that prices are subject to change without notice. Exceptionally, for each belt purchased before February 10<sup>th</sup>, 1999, dealers will be **automatically** credited \$ 21.09 on their parts account.



**P-CL-98-01**

April 21<sup>st</sup>, 1998

**DON'T MISS THIS!**

**NEW CUSTOM COLOR KIT FOR SUMMIT 600**

MEMO TO: ALL SKI-DOO SNOWMOBILE DEALERS & DISTRIBUTORS

ATTENTION: PARTS & SALES MANAGERS

**SUBJECT: NEW COLORED ACCESSORIES FOR SUMMIT 6001999**

Following your comments and requests at Club Ski-Doo '99 as well as the positive response we received concerning our 1999 color customizing kits, we have added colored accessories for the 1999 Summit 600.

They are the following:

↵ Color customizing kit, P/N 860 7051 00, includes:

yellow front and rear bumpers  
yellow hood grills  
yellow tunnel moldings  
yellow snowguard  
black footwell pads  
yellow non-skid strips  
yellow steering pad cover

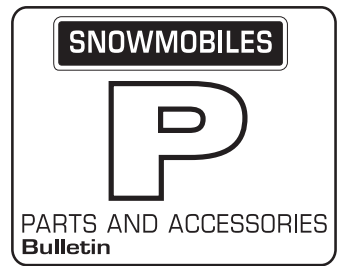
yellow checkered decals (windshield)  
yellow handle grips  
yellow flex ski soles  
yellow skid plate with rivets  
yellow starter handle  
yellow slider shoes

Sold separately:

- ↵ Grill kit, yellow, P/N 860 7052 00
- ↵ Checkered windshield decals, P/N 860 7053 00
- ↵ Seat cover, black & yellow, P/N 510 003 629.

Please note that pricing is the same as the colored accessories in your 1999 Part and Accessories Early Season Order Pad and that the color customizing kit, P/N 860 7051 00 is only available during the parts and accessories booking period. After this time, only the separate components will be available.

Bombardier Inc.  
Marketing - parts and accessories



Date: March 26, 1999

No. **99-108**

**TO ALL U.S. DEALERS**

**SUBJECT: New Gas Shock Oil**

Bombardier is pleased to offer the following new Ski-Doo® HPG-T/A gas shock oil.

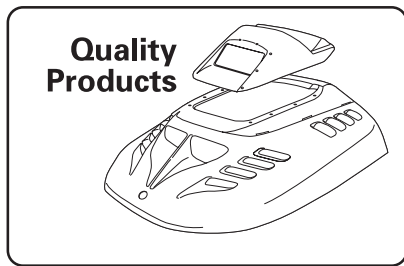
This new product has been thoroughly tested and approved by our engineers and is recommended for all top quality snowmobile gas shocks. It also has a high viscosity index for extreme temperatures encountered in snowmobile conditions and is designed to give top performance under high pressure conditions with added lubricity qualities, thus reducing friction and wear.

Please note that this oil is strictly a **snowmobile** gas shock oil.

You can place an order through your respective order desk.

PART NUMBER	DEALER PRICE	SUGGESTED RETAIL PRICE
413 711 806*	\$16.42	\$27.36

\*One litre bottle



Date: March 26, 1999

No. **99-108**

**TO ALL CANADIAN DEALERS**

**SUBJECT: New Gas Shock Oil**

Bombardier is pleased to offer the following new Ski-Doo® HPG-T/A gas shock oil.

This new product has been thoroughly tested and approved by our engineers and is recommended for all top quality snowmobile gas shocks. It also has a high viscosity index for extreme temperatures encountered in snowmobile conditions and is designed to give top performance under high pressure conditions with added lubricity qualities, thus reducing friction and wear.

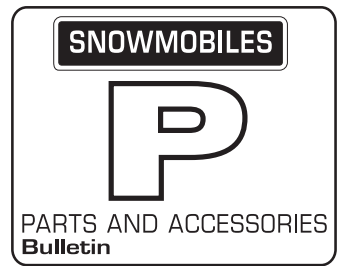
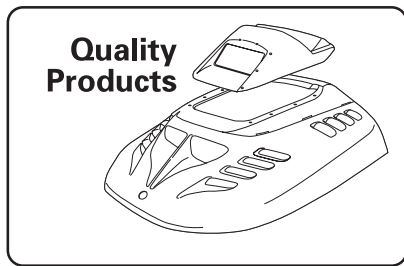
Please note that this oil is strictly a **snowmobile** gas shock oil.

You can place an order through your respective order desk.

PART NUMBER	DEALER PRICE	SUGGESTED RETAIL PRICE
413 711 806*	\$20.42	\$35.21

\*One litre bottle





Date: March 26, 1999

No. **99-108**

**TO ALL INTERNATIONAL DISTRIBUTORS**

**SUBJECT: New Gas Shock Oil**

Bombardier is pleased to offer the following new Ski-Doo® HPG-T/A gas shock oil.

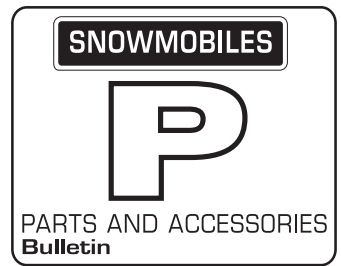
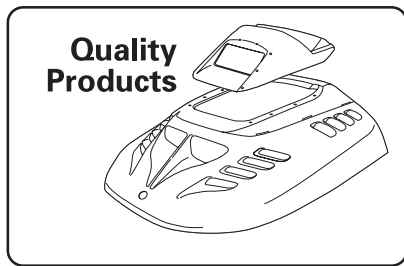
This new product has been thoroughly tested and approved by our engineers and is recommended for all top quality snowmobile gas shocks. It also has a high viscosity index for extreme temperatures encountered in snowmobile conditions and is designed to give top performance under high pressure conditions with added lubricity qualities, thus reducing friction and wear.

Please note that this oil is strictly a **snowmobile** gas shock oil.

You can place an order through your respective order desk.

PART NUMBER	DISTRIBUTOR PRICE
413 711 806*	\$11.33

\*One litre bottle



Date: March 26, 1999

No. **99-108**

**TO ALL CANADIAN DISTRIBUTORS**

**SUBJECT: New Gas Shock Oil**

Bombardier is pleased to offer the following new Ski-Doo® HPG-T/A gas shock oil.

This new product has been thoroughly tested and approved by our engineers and is recommended for all top quality snowmobile gas shocks. It also has a high viscosity index for extreme temperatures encountered in snowmobile conditions and is designed to give top performance under high pressure conditions with added lubricity qualities, thus reducing friction and wear.

Please note that this oil is strictly a **snowmobile** gas shock oil.

You can place an order through your respective order desk.

PART NUMBER	DISTRIBUTOR PRICE
413 711 806*	\$14.50

\*One litre bottle